

Northgate Link Extension Overview

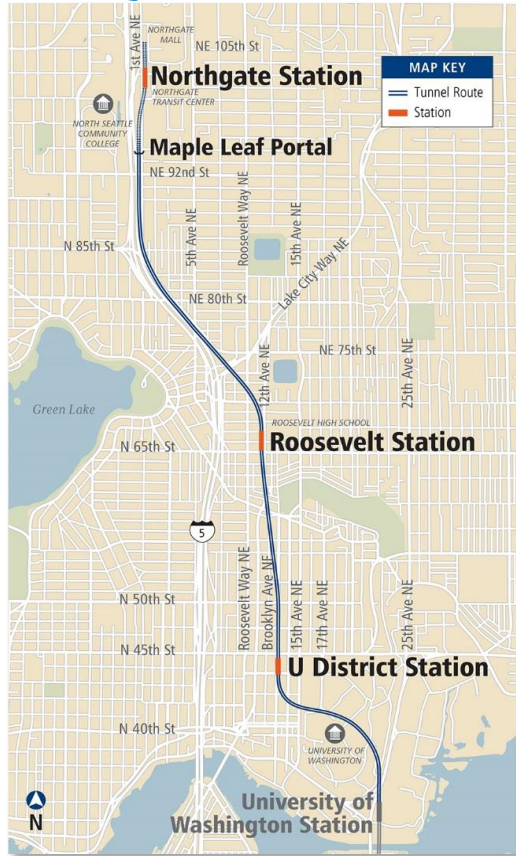
EnoMAX Site Visit

August 8, 2019

WSDOT I-5
N NORTHGATE WAY



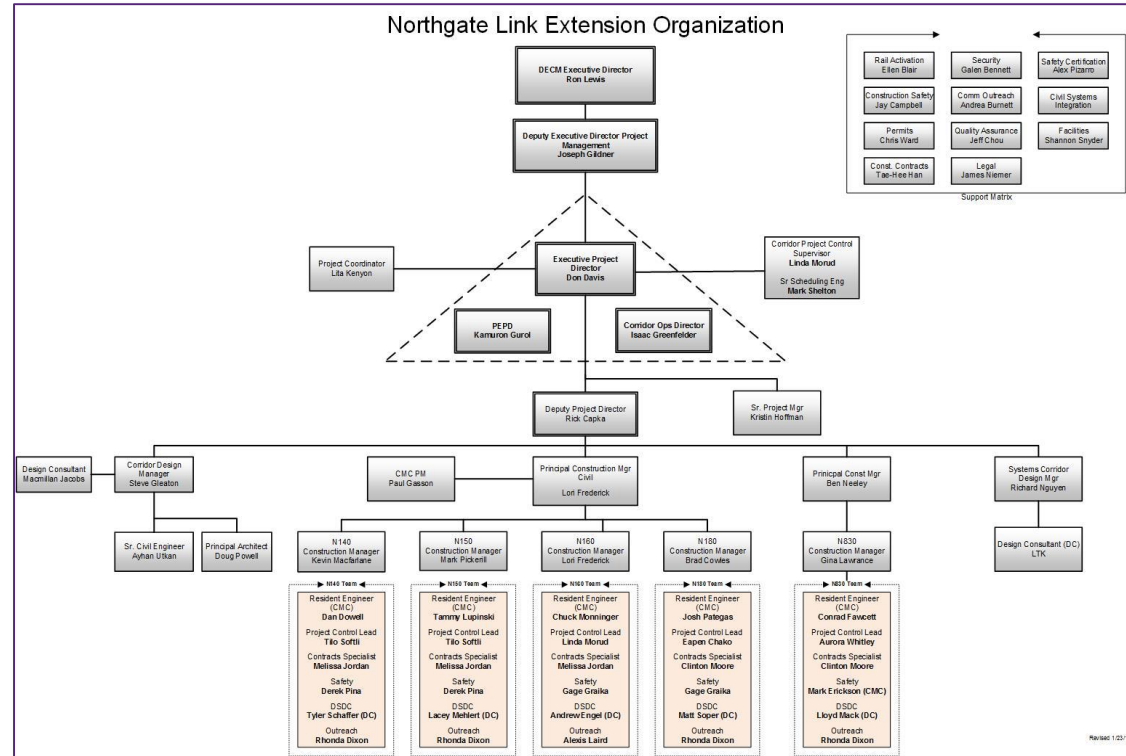
Project Overview



- *4.3 mile extension from UW to Northgate*
- *3 light rail stations & 1 parking garage*
- *Fast and reliable service in congested I-5 corridor (14 minutes from Northgate to Downtown)*
- *Estimated over 60,000 weekday boardings (2030)*
- *Serves academic facilities (North Seattle College, Roosevelt High School and UW)*
- *Serves active business districts at Northgate, Roosevelt and U District*
- *TOD projects are moving ahead at all three station sites*

Project Organization

- *Integrated Sound Transit Team:*
 - *~25 dedicated ST staff*
 - *ST support staff*
 - *Design consultants*
 - *Construction management consultants*
 - *11 separate construction contracts (5 of which are still currently active)*



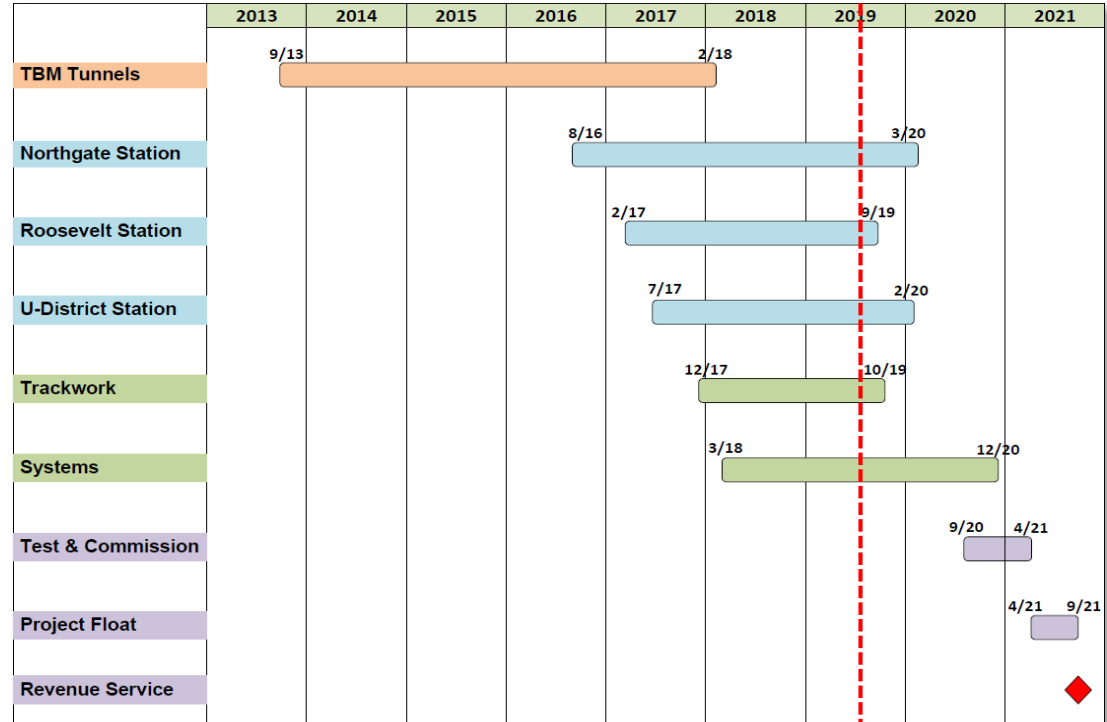
Project Budget & Schedule

➤ \$1.9B Budget

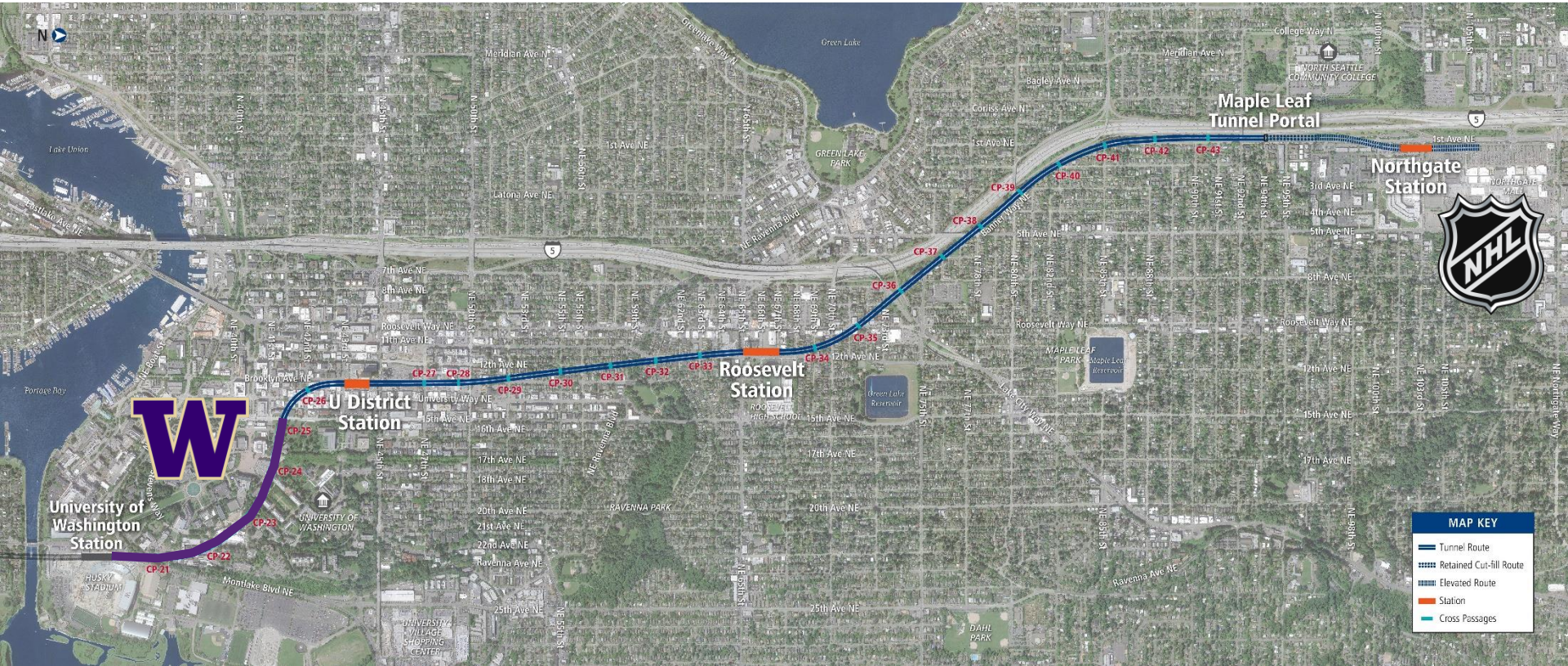
➤ Construction Schedule:

- Started 2013
- Currently 85% complete
- Scheduled to open for Revenue Service in September 2021

4.5 million labor hours to-date!



Project Alignment



N125 – TBM Tunnels UW Station to MLP

Contract Overview:

- *Design-Bid-Build contract with JCM Northlink LLC*
- *Scope of Work: portal structure, 2 station box excavations, 3.5 miles twin 18-ft 10-in tunnel, 23 cross passages, tunnel invert, walkway & raceways, tunnel lighting and dry standpipe*
- *Contract Amount: \$500m*
- *Construction Start: September 30, 2013*
- *Construction Complete and Warranty Inspections Complete*



N125 – TBM at Roosevelt Station



04/01/2015 10:50

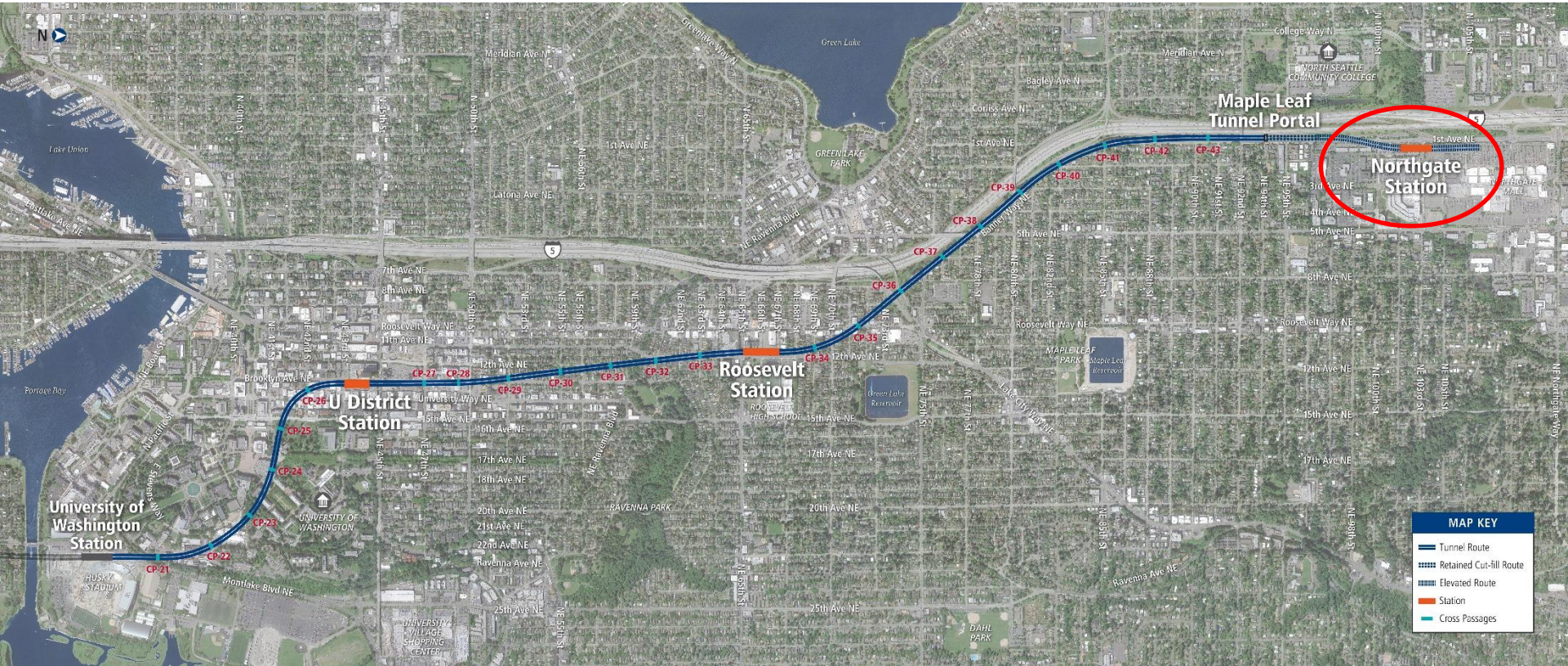
N125 – TBM Removal at UWS



N125 – Cross Passage Construction



Project Alignment



MAP KEY	
	Tunnel Route
	Retained Cut-fill Route
	Station
	Cross Passages



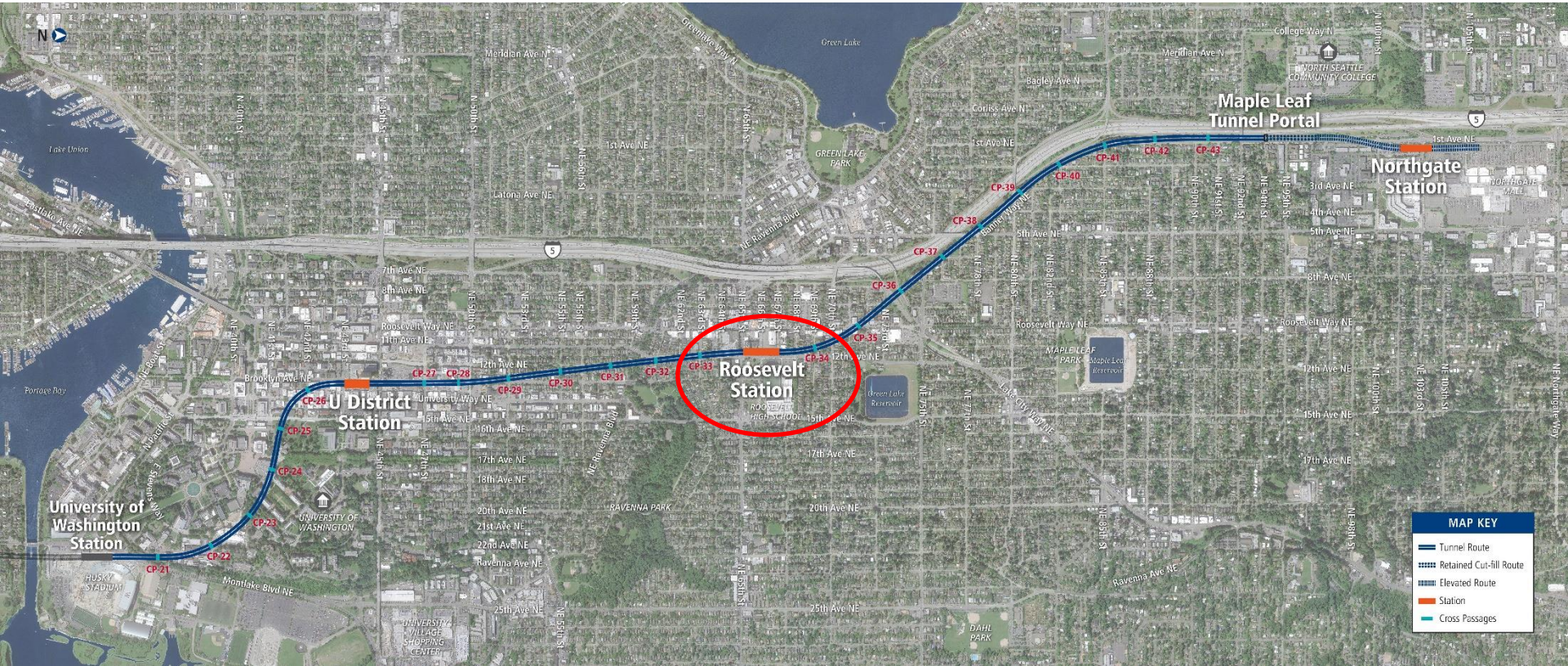
N160 - Northgate Station, Guideway, Garage

Contract Overview:

- *Design-Bid-Build contract with Absher Construction*
- *Scope of Work: 0.7 mile elevated guideway, elevated station, 450-stall parking garage*
- *Contract Amount: \$184m*
- *Construction Start: October 18, 2016*
- *Scheduled Completion: Q2 2020*
- *Construction 77% Complete*



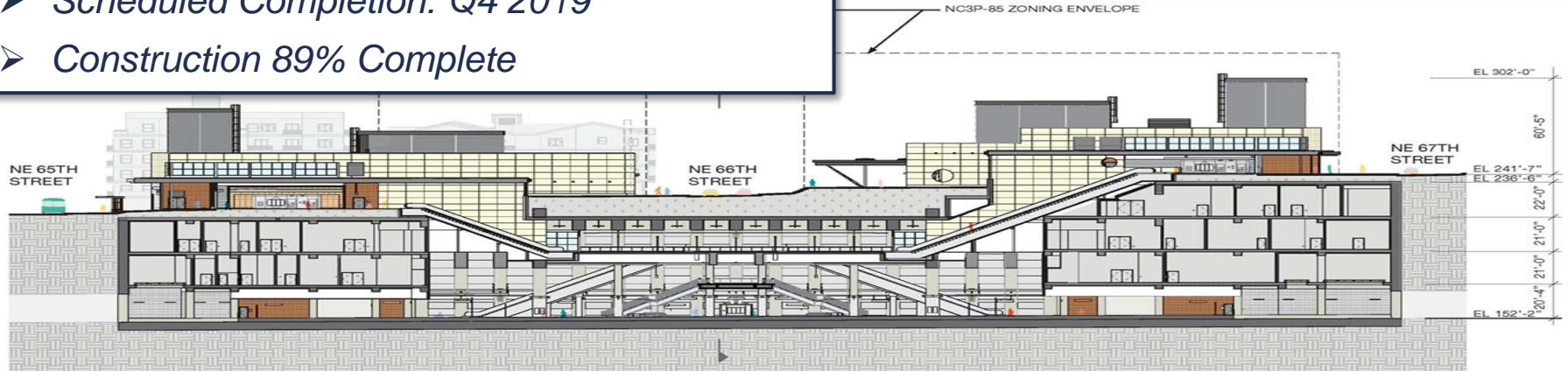
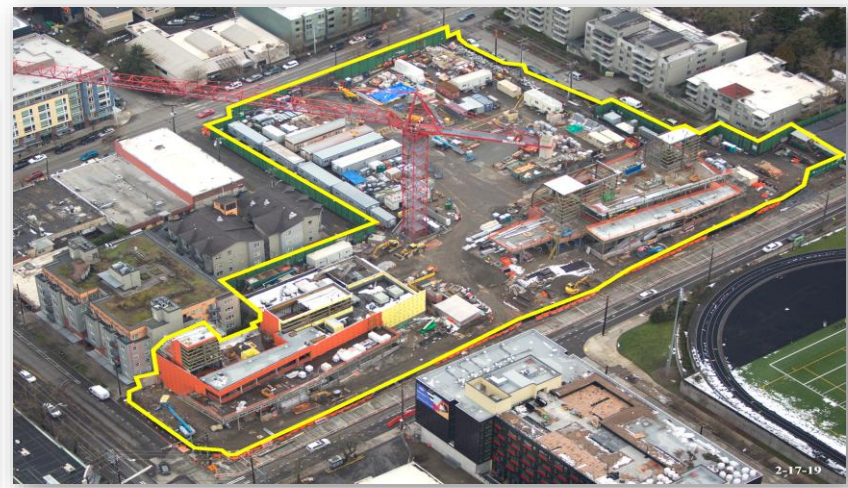
Project Alignment



N150 - Roosevelt Station

Contract Overview:

- GC/CM contract with Hoffman Construction
- Scope of Work: 90-ft deep, 480-ft long, 4-level underground station; 2 head houses
- Contract Amount: \$160m
- Construction Start: February 2017
- Scheduled Completion: Q4 2019
- Construction 89% Complete



N150 - Roosevelt Station

2013



N150 - Roosevelt Station

2017

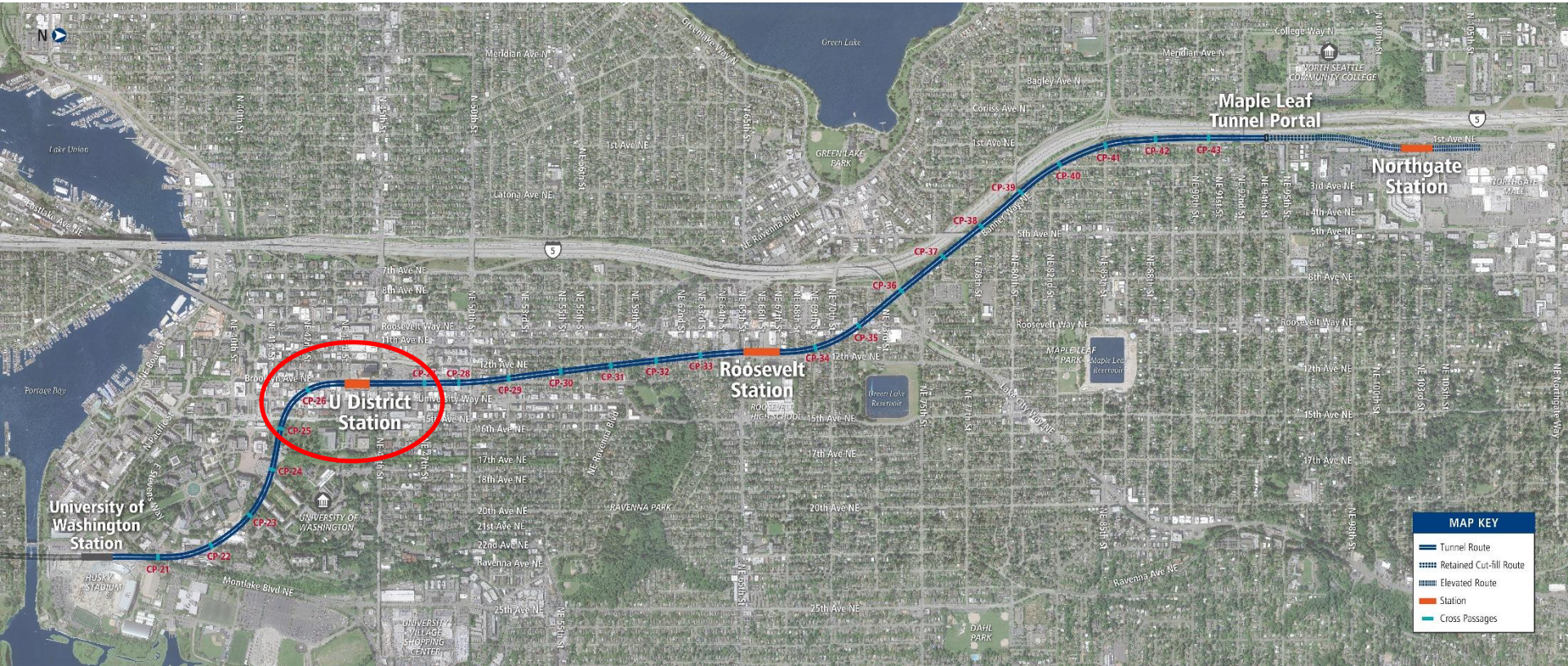


N150 - Roosevelt Station

2019



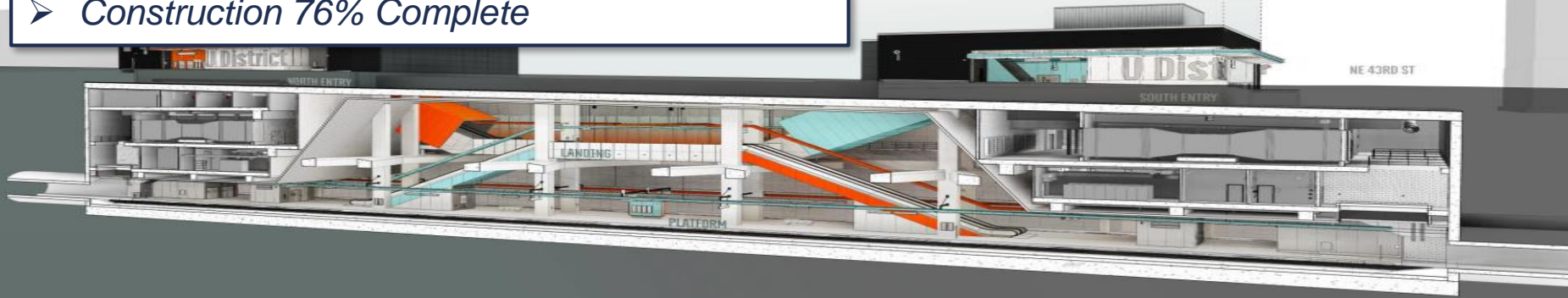
Project Alignment



N140 - U District Station

Contract Overview:

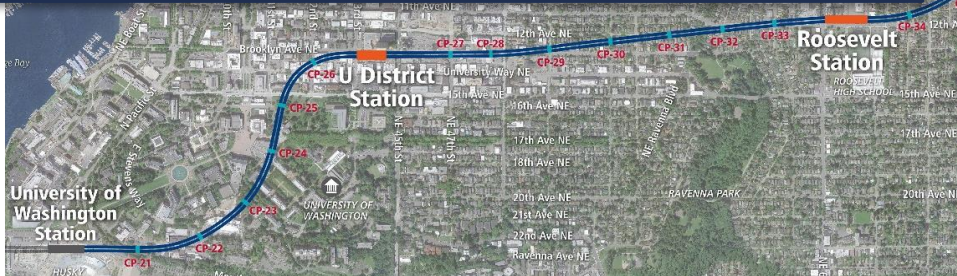
- GC/CM contract with Hoffman Construction
- Scope of Work: 80-ft deep, 400-ft long, 4-level underground station; 2 head houses
- Contract Amount: \$164m
- Construction Start: July 2017
- Scheduled Completion: Q2 2020
- Construction 76% Complete



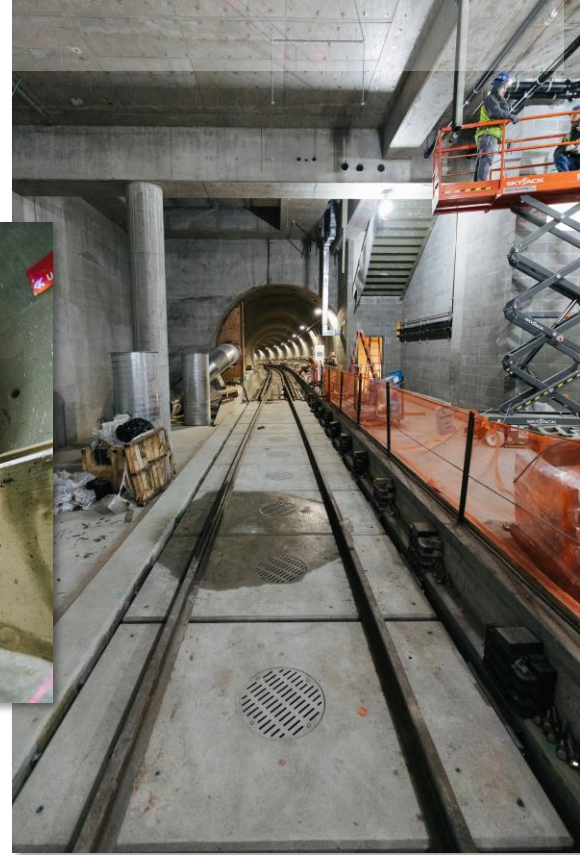
N180 - Trackwork

Contract Overview:

- Design-Bid-Build contract with Stacy and Witbeck
- Scope of Work: Trackwork (plinth + rail) for alignment; 5 Hz & 16 Hz floating slabs
- Contract Amount: \$75m
- Construction Start: August 2016
- Scheduled Completion: Q4 2019
- Construction 95% complete



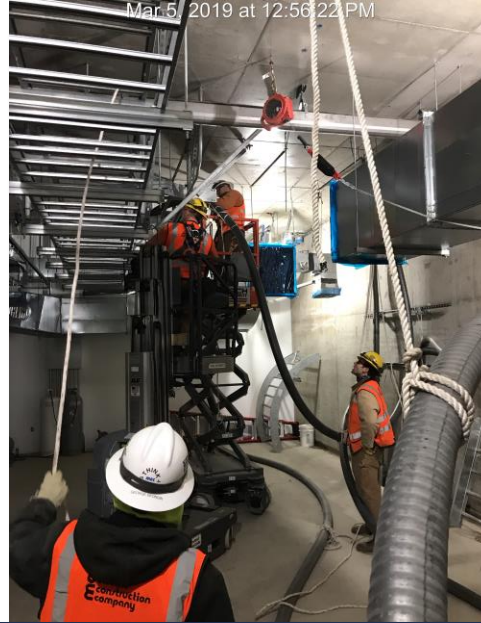
N180 – Trackwork – Floating Slabs



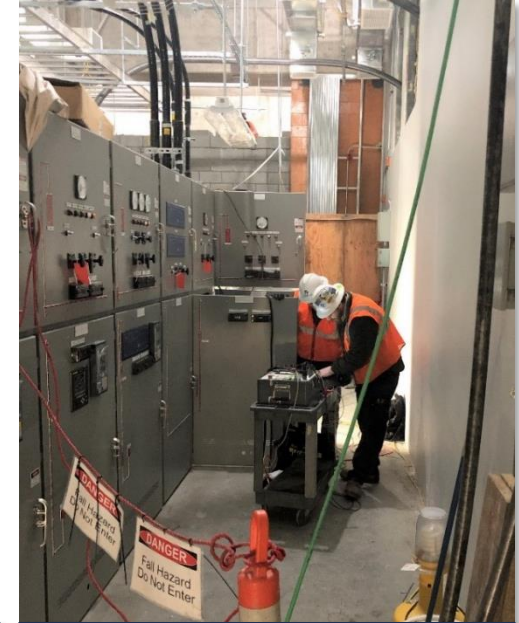
N830 - Systems

Contract Overview:

- *Heavy Civil GC/CM contract with Mass Electric (MEC)*
- *Scope of Work: Traction Power, Communications, Signaling*
- *Contract Amount: \$105m*
- *Construction Start: Q2 2018*
- *Scheduled Completion: Q4 2020*
- *Construction 39% complete*



Power Cable Installation at U District



Equipment Testing at Roosevelt

Sound Transit Project Delivery Approach

Construction Contract Procurement

- *3 construction contract delivery methods currently used by Sound Transit:*
 - **Design-Bid-Build (8 Northgate Link Contracts)**
 - **GC/CM (3 Northgate Link Contracts)**
 - **Design-Build (not used on Northgate Link)**

Sound Transit Project Delivery Approach

Construction Contract Management

➤ Safety Risks and Challenges

- Construction from elevations - Aerial Guideway***
- Subcontract Coordination***
- Work on trackway***
- Site Security***
- Complacency***

Sound Transit Project Delivery Approach

Coordinated Installation Plan (CIP)

- *26 major interface points between 6 Contracts*
- *Contractually mandated meetings between interfacing contractors:*
 - *Safety – “Care and Custody”*
 - *Schedule*
 - *Spatial Planning*

Sound Transit Project Delivery Approach

Construction Contract Transition to Operations (T2O)

- ***Early engagement of Operations and Facilities***
- ***Tracking of Issues***
- ***Issue Resolution***
- ***Lessons Learned***

Thank you.



 [soundtransit.org](https://www.soundtransit.org)

