

Eno MAX

Where we've been,
Where we're going

July 12, 2021





WELCOME



Metro[®]





gillig



nabi



bus



logo



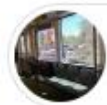
c40lfr



tempe



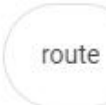
new flyer



inside



roanoke



route



d40lf



New Express buses cruise across the ...
valleymetro.org



Contact Us | Valley Metro
valleymetro.org



Valley Metro - Home | Fa...
facebook.com



Valley Metro
valleymetro.org



Check out Valley Metro's newest buse...
valleymetro.org



Valley Metro Customer Spot
zonarsystems.com



Valley Metro Adding 14 LRVs and Two ...
railwayage.com



Valley Metro
valleymetro.org



Valley Metro - Wikipedia
en.wikipedia.org



Valley Metro remains devoted to its ...
valleymetro.org



Arizona Avenue A
valleymetro.org



Valley Metro Bus - Wikipedia



These Valley Metro Express Bus Routes ...



Phoenix Transit System 4428) | Bus city ...



New Valley Metro express buses start ...



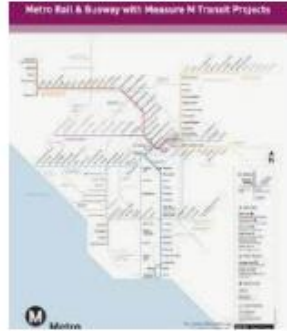
input on potentia



Los Angeles Metro Guide...
timeout.com



L.A. Metro faces funding gaps on major ...
latimes.com



transit system will look li...
thesource.metro.net



How to Ride LA Metro Even If You're a ...
lamag.com



Los Angeles Metro Rail - Wikipedia
en.wikipedia.org



LA Metro Future Pos...
spectrumnews1.com



Regional Rail
metro.net



Map: A potential 2040 Los An...
scpr.org



CTC Allocates \$27.8MM for LA Metro LRVs ...
railwayage.com



Metro Rail Subway and Light Rail
urbanrail.net



LA Metro Approves Fareless Rides For ...
losangeles.cbslocal.com



LA Metro's do...
dailynews.com



Los Angele...



Los Angeles Metro 2020-2060. The Future ...



Climate Bonds Initiative



L.A. Metro Rail's High Operating Costs ...



Rail News - L.A. Metro's board OKs ...



Metro Projects - In



What Happens When WMATA Shut...
cip.gmu.edu



WMATA fantasy combo map – Gre...
ggwash.org



WMATA proposes cutting service at two ...
alextimes.com



WMATA Planning \$1.4 Billion in Safety ...
ohsonline.com



Proposed supplemental Me...
wmata.com



wmata map » Was...
bu.edu



Wikipedia



Washington Metro Area Transit Authority ...
electricalalliance.org



WMATA expands Orange, Silver line ...
progressiverrailroding.com



WMATA officials hope "normal" Metro ...
ggwash.org



Report: WMATA 6000-Series Cars ...
railwayage.com



urred ...



Metro (@wmata) | Twitter



Orange Line (Washington Metro) - Wikipedia



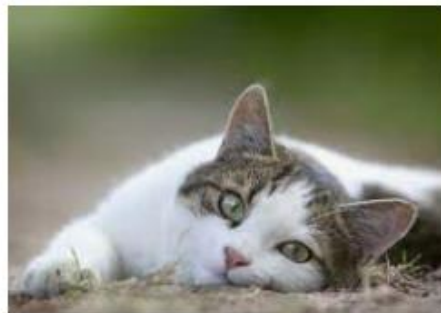
Metro rail closures effect...



8000-series railcar procurement ...



WMATA Recruitment Event - Wo...



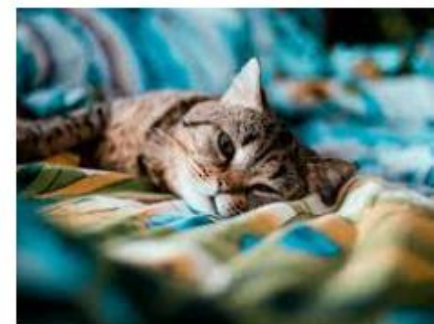
Cats review: A deep and inscrutabl...
vox.com

The cat's meow | The Humane Society of ...
humanesociety.org

Here's why cats hate belly rubs so much
nationalgeographic.com

Coronavirus: Cat owners fear pets will ...
bbc.com

Why do we think cats are un...
bbc.com



Cats | The Humane Society of the United ...
humanesociety.org

Food recall as hundreds of cats die ...
independent.co.uk

The Shots Your Cat Needs
pets.webmd.com

Why Do Cats Hate Water? | Britannica
britannica.com

Your pets can catch Covid from you, and
nbcnews.com



Us? You May Be ...

Soon, the internet will make its own ...
theverge.com

How we found coronavirus i...
theconversation.com

Cats' Bound To Lose At Least \$71M After...
deadline.com

Cats Can Get Coronavirus, Study ...
scientificamerican.com

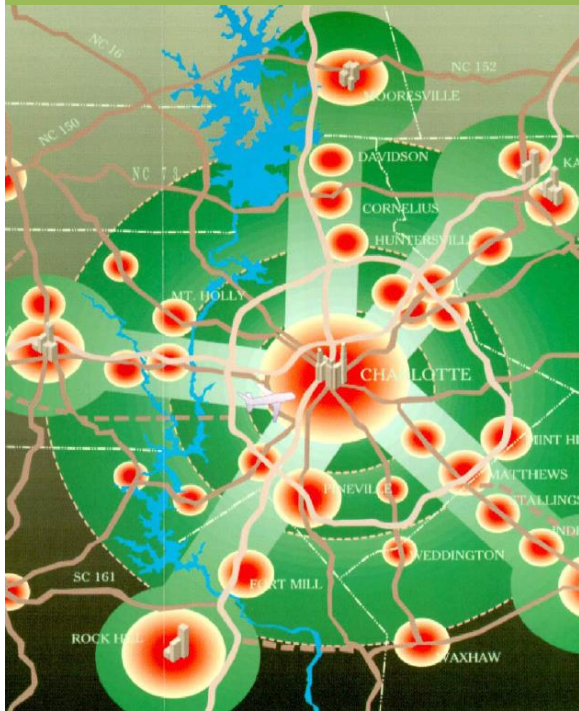
Cats Care About People More Than Food ...
time.com



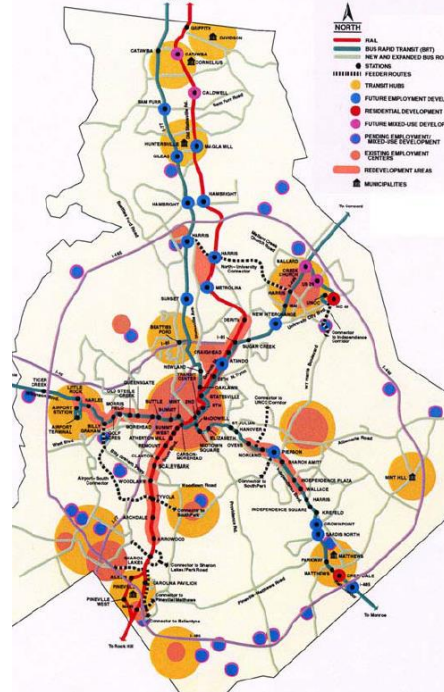


It Started with a Vision

Developed the Vision



Refined the Vision



Voters Approve Sales Tax

1998 Road Bond Package

2025 Transit Land-Use Plan

The Challenge... Charlotte-Mecklenburg is projected to experience substantial growth over the next 25 years. Employment projections forecast an increase of 47% by the year 2025. This economic growth is directly tied to maintaining Charlotte-Mecklenburg's quality of life. Accompanying such projections, however, are a number of trends which threaten to impact economic growth:

- Unfocused sprawl allows piecemeal development to occur, pushing traffic deeper into the countryside.
- Key roads overload and break down while gridlock forces more sprawl
- Core areas suffer and experience a slow decline and weakened local economy
- Simply building more roads continues the cyclical effects of congestion

The Vision... In response to this challenge, an integrated rapid transit/land-use vision has been adopted which seeks to:

- Maintain economic vitality
- Expand transportation and employment options
- Respond to demographic trends
- Enhance Center City and core area growth

This transit/land use vision has been combined with a series of road and highway improvements to offer a balanced approach to Charlotte-Mecklenburg's growth challenges.

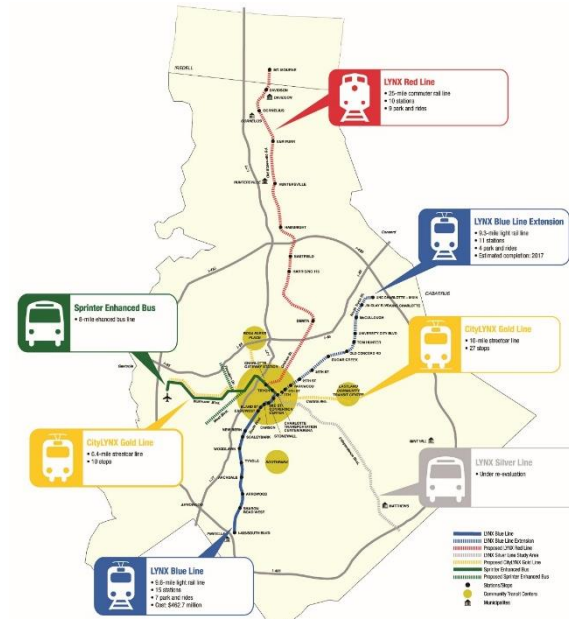
THE WHEELS OF CHANGE
A COMMITMENT BY METRO

600 East Fourth Street Charlotte, NC 28202 (704) 236-7800



Corridor System Plan

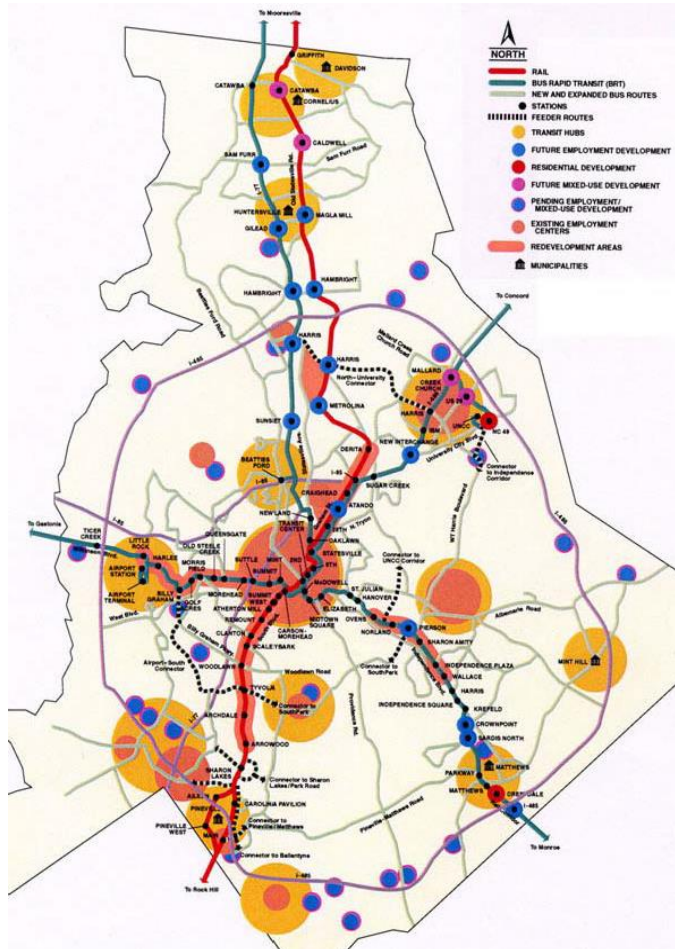
Adopted





The Vision: Transit and Land Use Integration

2025 Transit and Land Use Plan

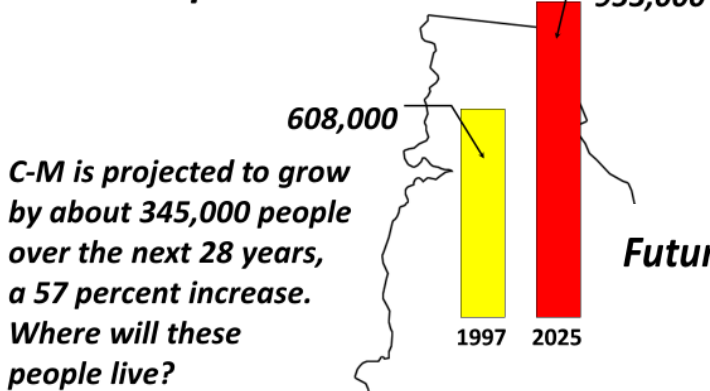


- Vision for a long-term growth management strategy
- Integrates rapid transit and mixed-used development along 5 transportation corridors
- Expands transit system to serve between the rapid transit corridors
- Provide more transportation choices to meet mobility needs
- Support sustainable growth for region
- Approved by Mecklenburg County voters in 1998
- Updated in 2006:
2030 Transit System Plan

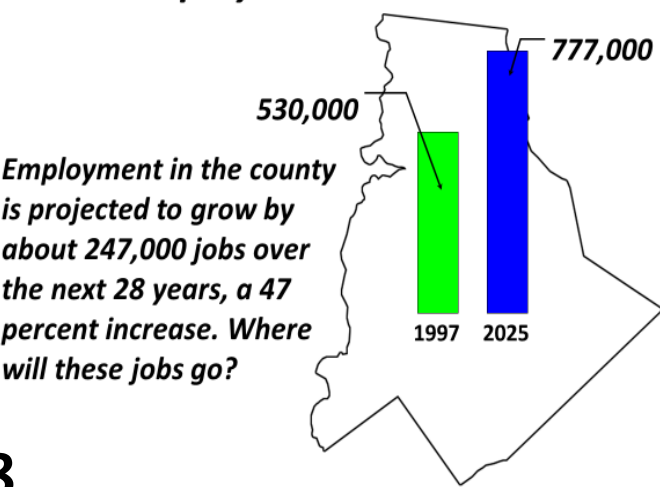


What we thought....

Future Population Growth



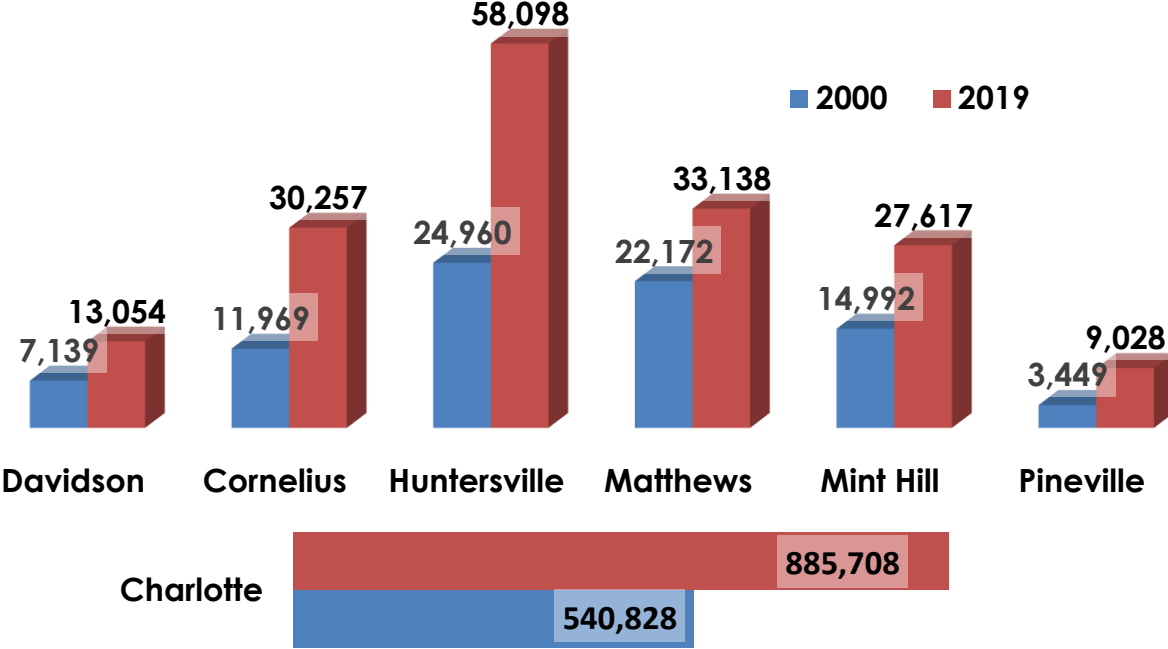
Future Employment Growth



2025 Forecast in 1998

And what actually happened

Mecklenburg County
 2019 Population: 1,110,356
 2017 Employment: 722,577





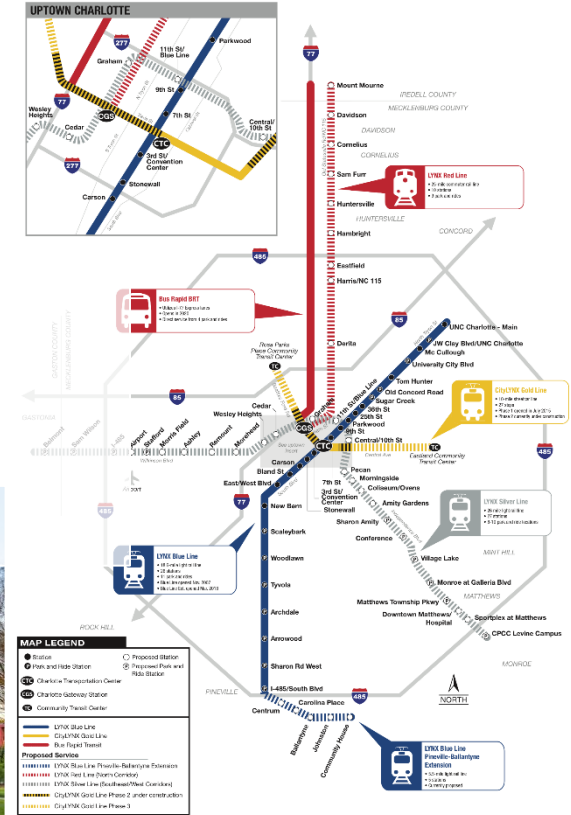
Because of 1998...

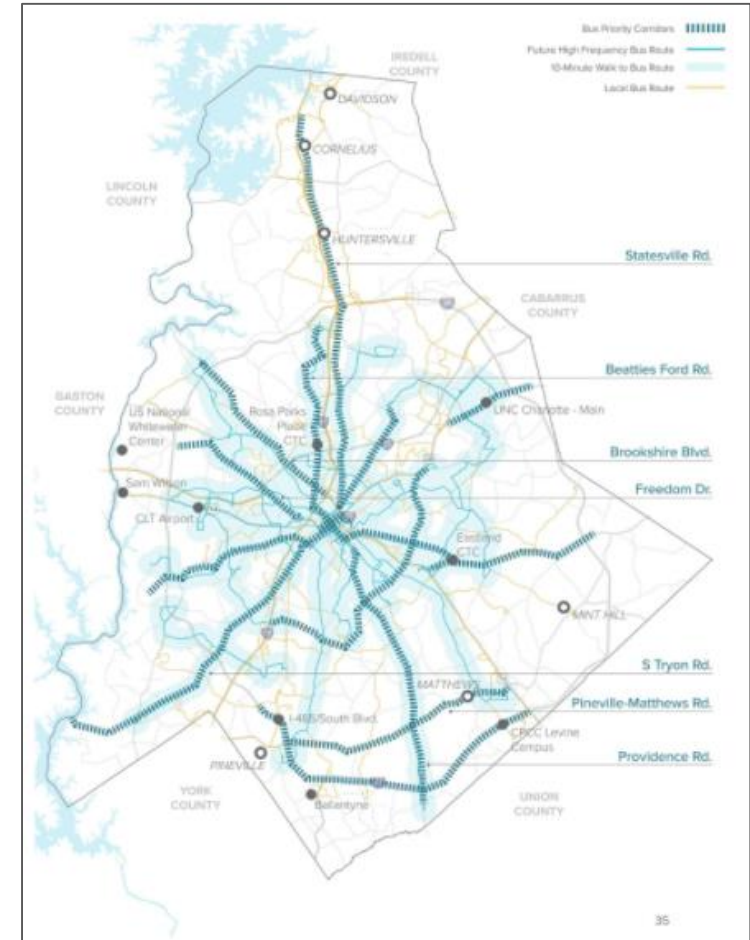
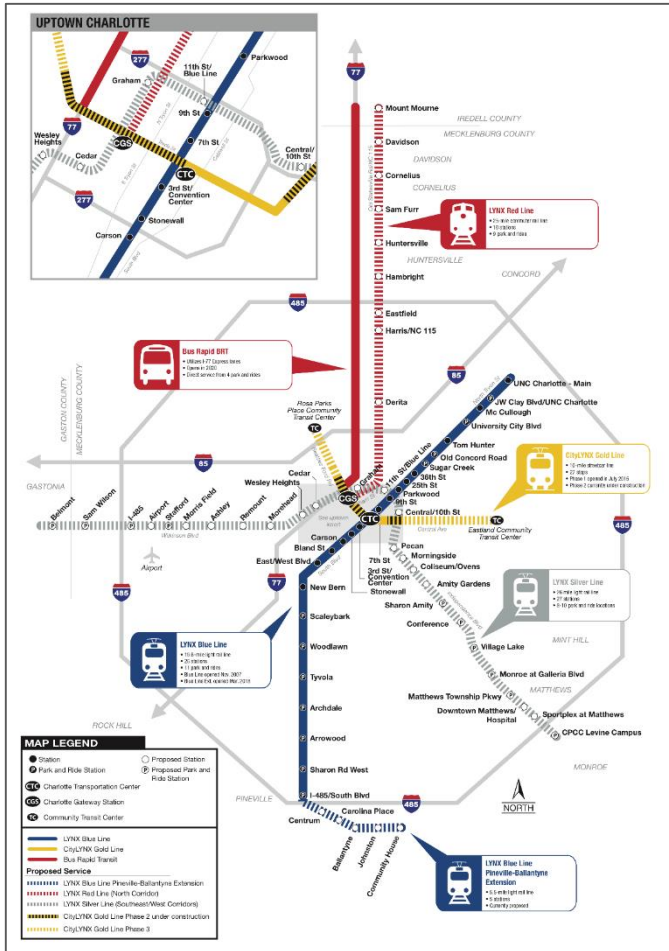
- Expanded bus fleet from 125 - 323
- Created CATS as an agency
- Expanded bus network and paratransit services to serve Mecklenburg County
- Developed regional partnership to expand express service
- 19 miles of light rail
- 4 miles of streetcar
- The Rail Trail!
- Places like SouthEnd & Noda....





Advancing the Plan



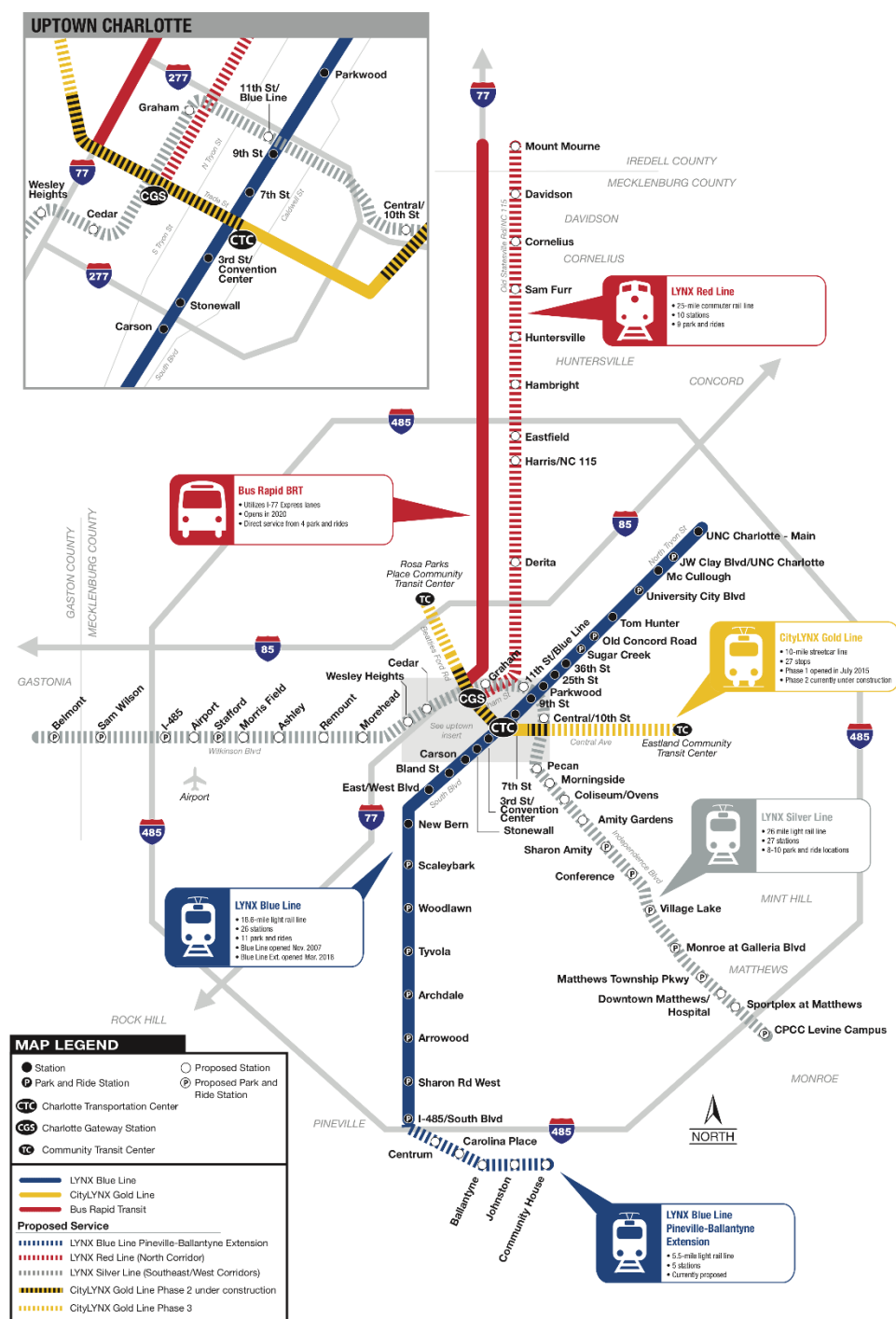




Connecting Efforts



- LYNX Blue Line
 - South Corridor 2007
 - Northeast Corridor 2018
 - Pineville/Ballantyne Extension
 - Platform Expansion
- LYNX Silver Line Program
 - Design & Environmental Services
 - Transit Oriented Development Study
 - Rail Trail Study
- North Corridor Strategy
 - MetroRapid I-77 BRT Phased Implementation
 - LYNX Red Line—Continue NS Discussions

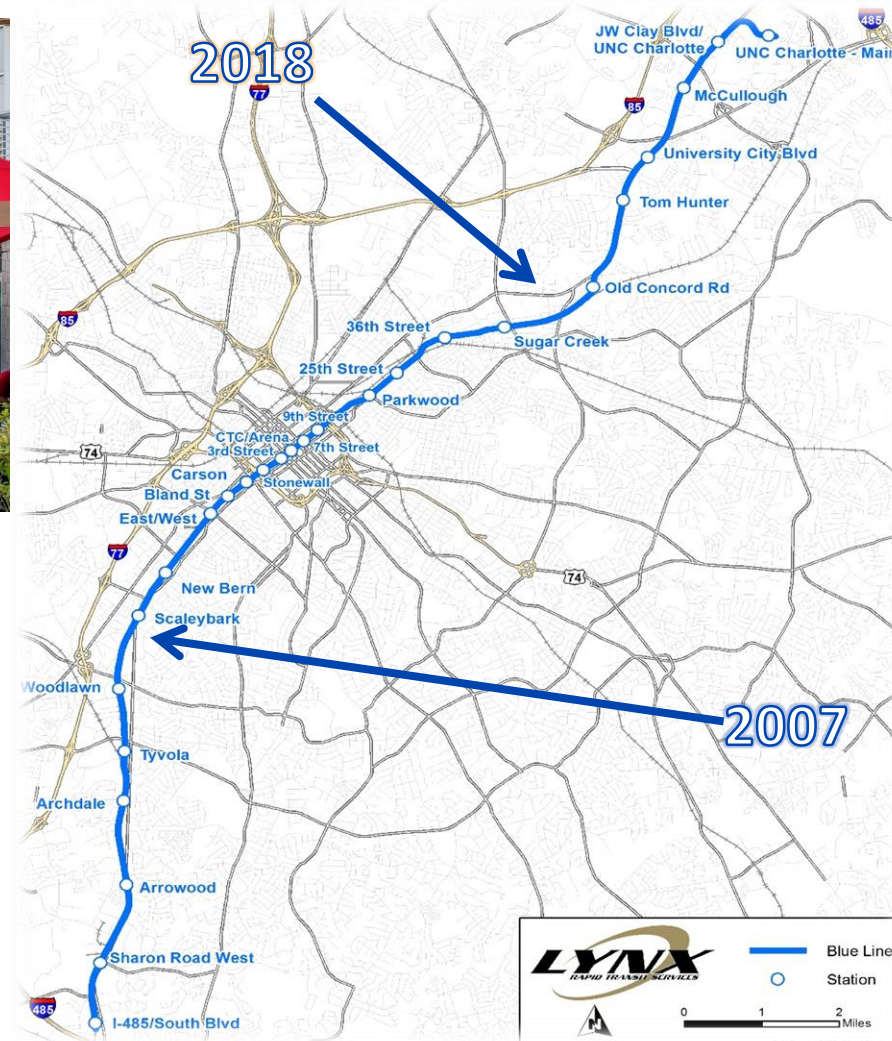




LYNX Blue Line

2007: Original South

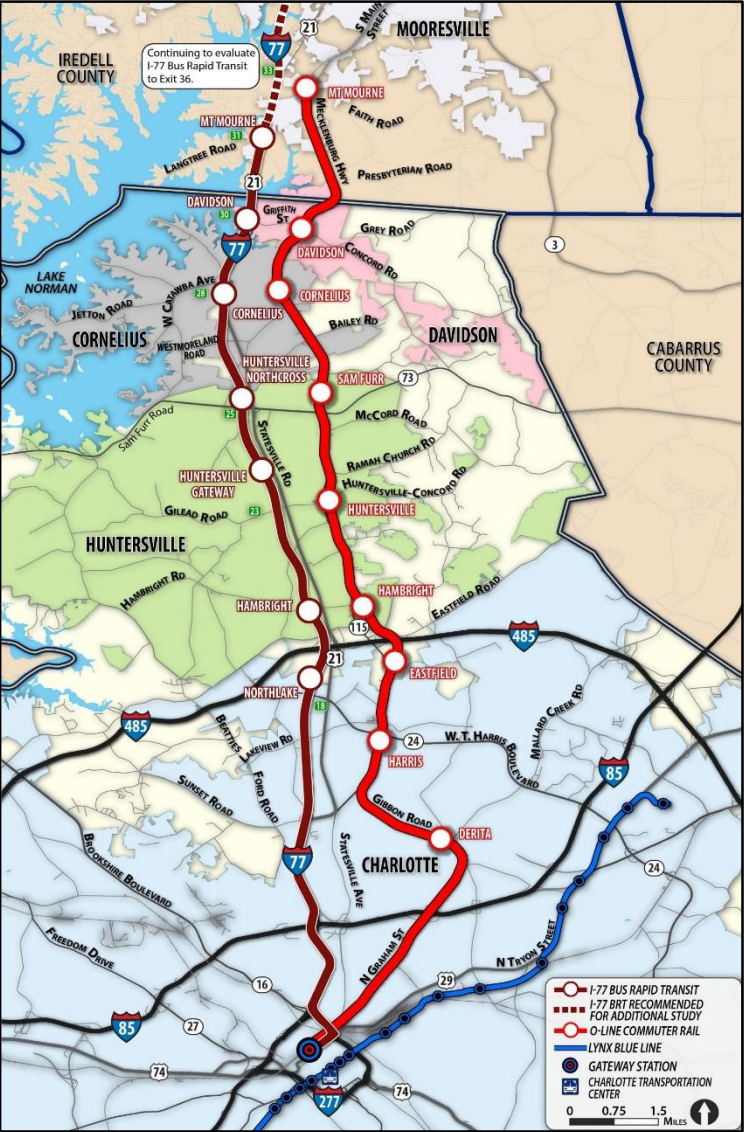
- 9.6 miles, 15 stations
- 7 park and ride facilities
- 3,191 parking spaces
- 4 stations extended to accommodate 3-car trains
- Originally terminus planned in Downtown Pineville



2018: Northeast Extension

- 9.3 miles, 11 stations
- 4 park and ride facilities
- 3,277 parking spaces
- Accommodates 3-car trains
- Improvements to North Tryon St.
- Connects UNCC campuses

North Corridor Rapid Transit Strategy



Short Term

- Village Rider and Express bus stop amenity improvements
- Continued express lane bus service improvements as recommended in the North Corridor Mobility Study and Envision My Ride

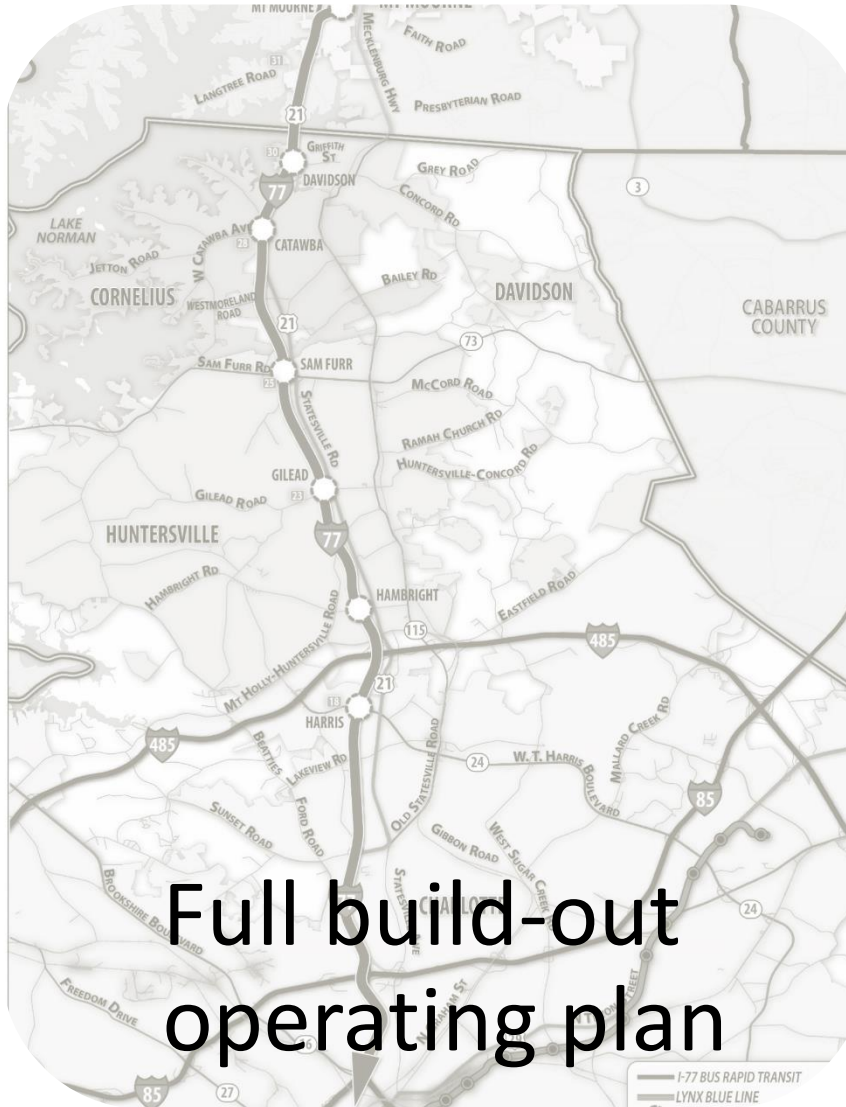
Medium Term

- Implementation of an I-77 Bus Rapid Transit service from Charlotte Gateway Station to Mooresville to include:
 - All day service including nights and weekends
 - Four new park and rides and two new express lane direct connects
 - Integrated BRT stations into mixed use developments that also incorporate emerging mobility technologies for first/last mile.
- Begin project definition of concept in 2020

Long Term

- Continue dialogue with Norfolk Southern on use of the “O” Line corridor for a Rapid Transit project

I-77 Enhanced BRT Program



Full build-out
operating plan



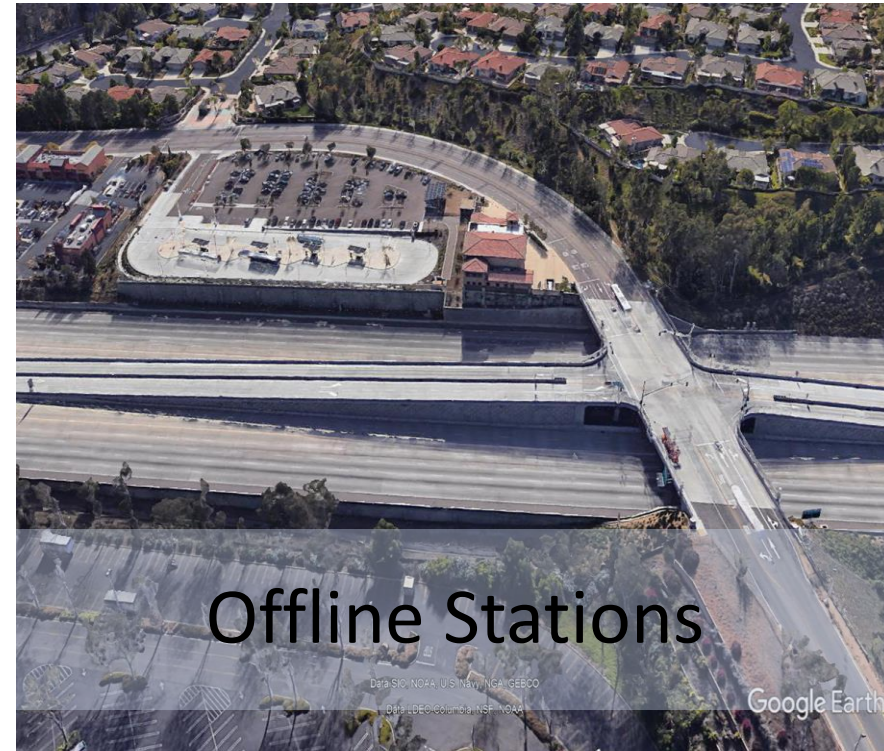
Family of services
operating in the
corridor



Mobility hub with
Flexibility to offer
future autonomous
service

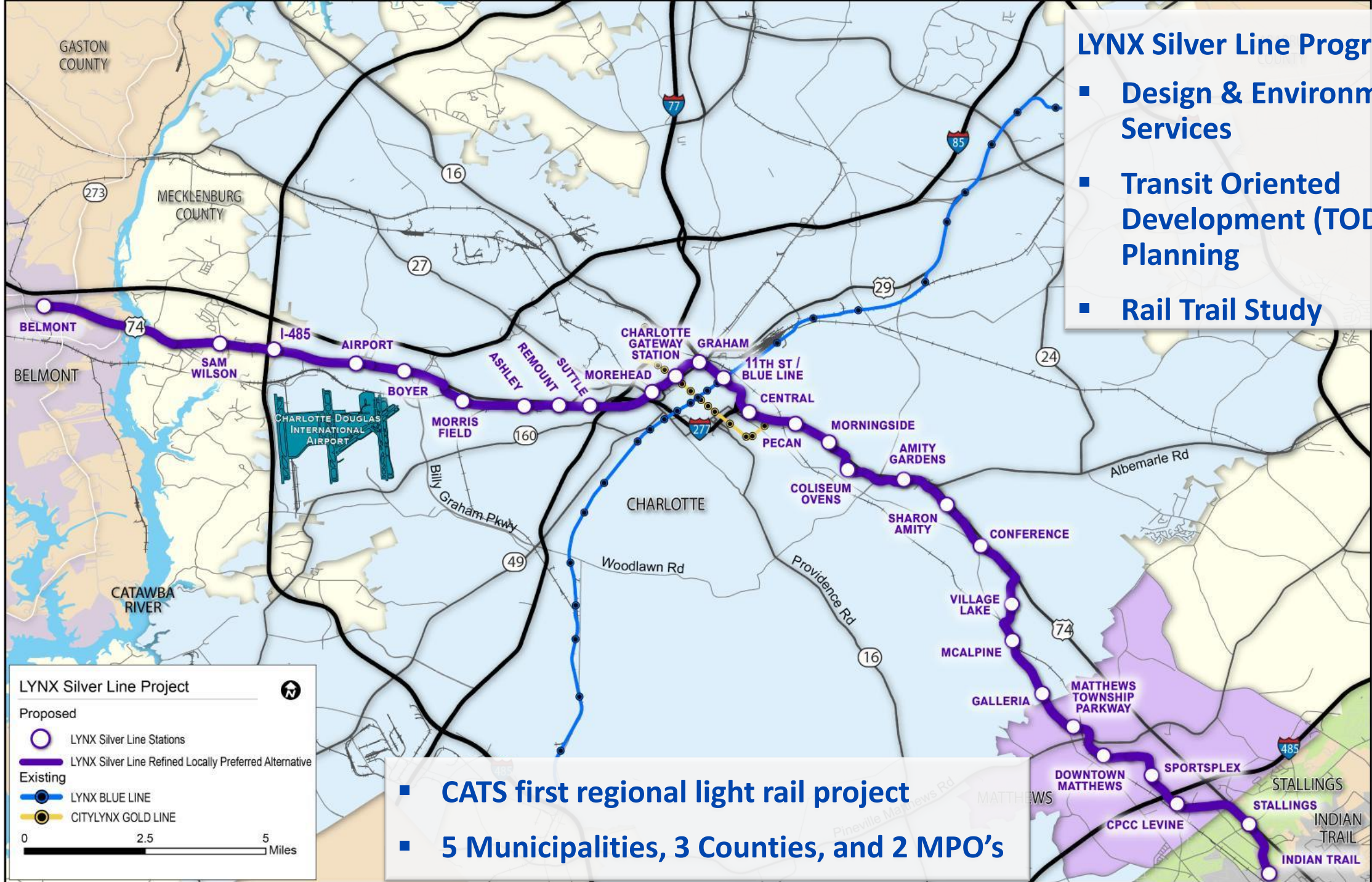


I-77 BRT – Types of Stations



LYNX Silver Line Program

- Design & Environmental Services
- Transit Oriented Development (TOD) Planning
- Rail Trail Study



LYNX Silver Line Project

Proposed

- LYNX Silver Line Stations
- LYNX Silver Line Refined Locally Preferred Alternative

Existing

- LYNX BLUE LINE
- CITYLYNX GOLD LINE

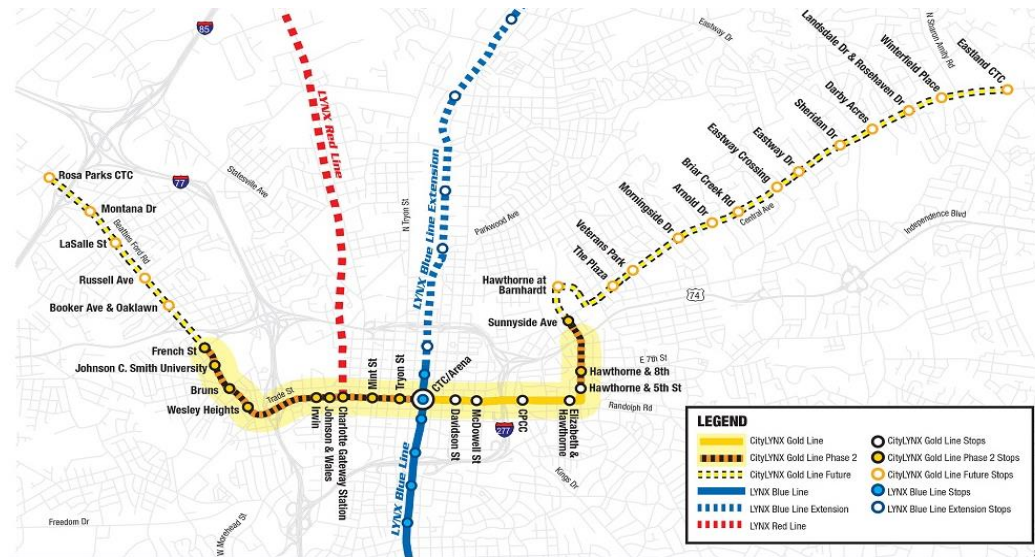
0 2.5 5 Miles

- CATS first regional light rail project
- 5 Municipalities, 3 Counties, and 2 MPO's

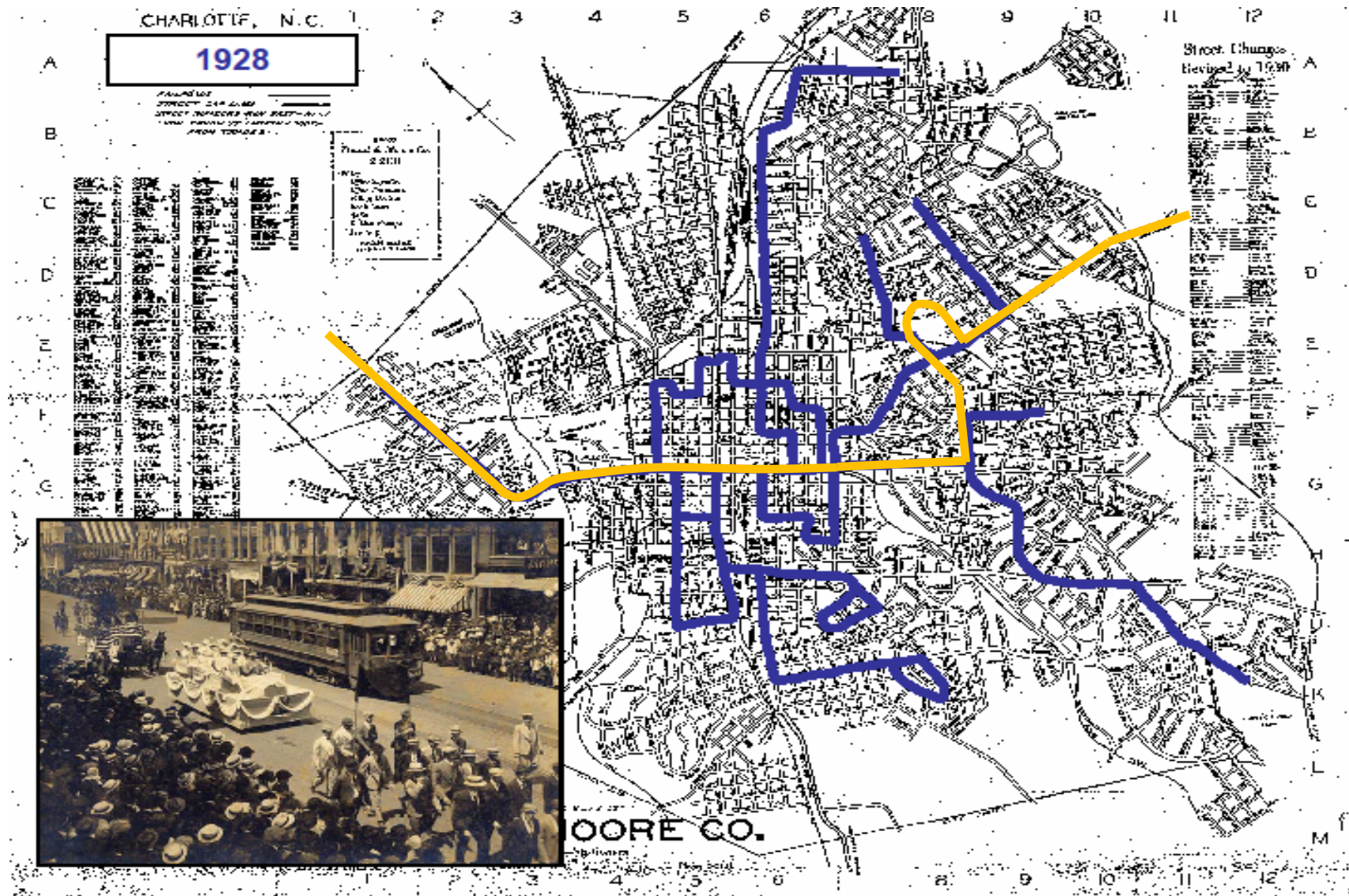


CityLYNX Gold Line

- **Phase 1 (2015)**
 - Charlotte Transit Center to Novant Health Used “Vintage” trolley
 - \$37 Million -Urban Circulator
- **Phase 2 Extension (2021 Under construction)**
 - Extends to Johnson C. Smith and Sunnyside Ave in Elizabeth
 - Vehicles upgraded to modern Siemens model
 - \$150 Million -Small Starts
- **Phase 3 Extension (Future)**
 - Extension to Rosa Parks CTC and Eastland CTC
 - Design update to begin soon

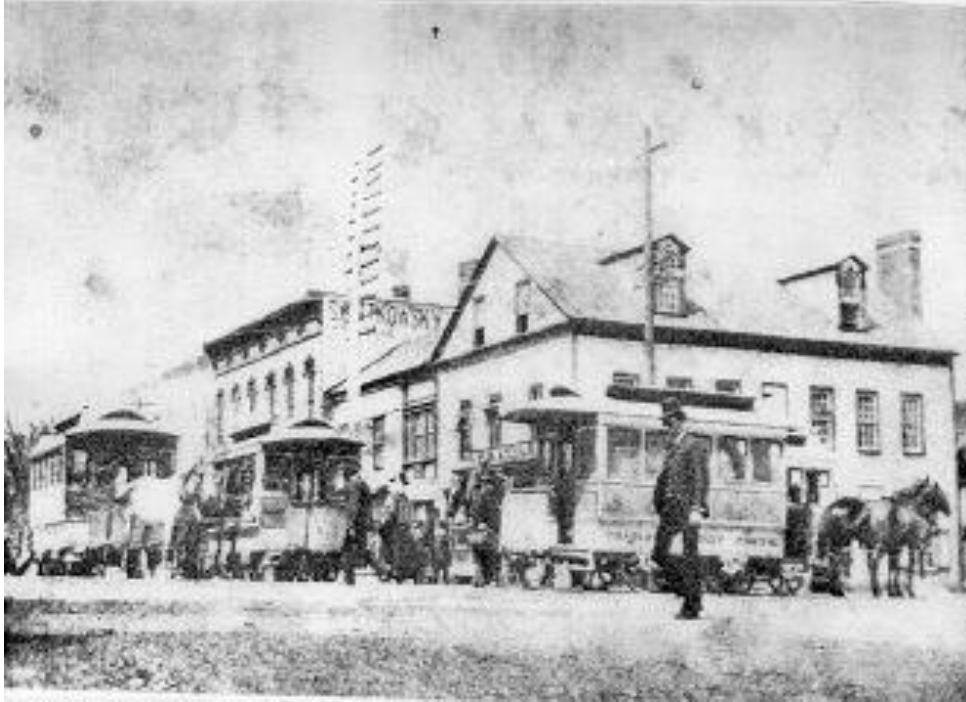


Charlotte Streetcar History





Charlotte Streetcar History



- Horse-drawn streetcar started in 1887
- First electrified streetcar started in 1891
- Car 85 last run on March 14, 1938
- Streetcar replaced by buses in late 1930's





Car 85 Back in Action





Piece of Charlotte's transportation history moved to Spencer museum – for now

By David Perlmutt

dperlmutt@charlotteobserver.com



MARCH 12, 2016 04:16 PM, UPDATED MARCH 13, 2016 10:26 AM



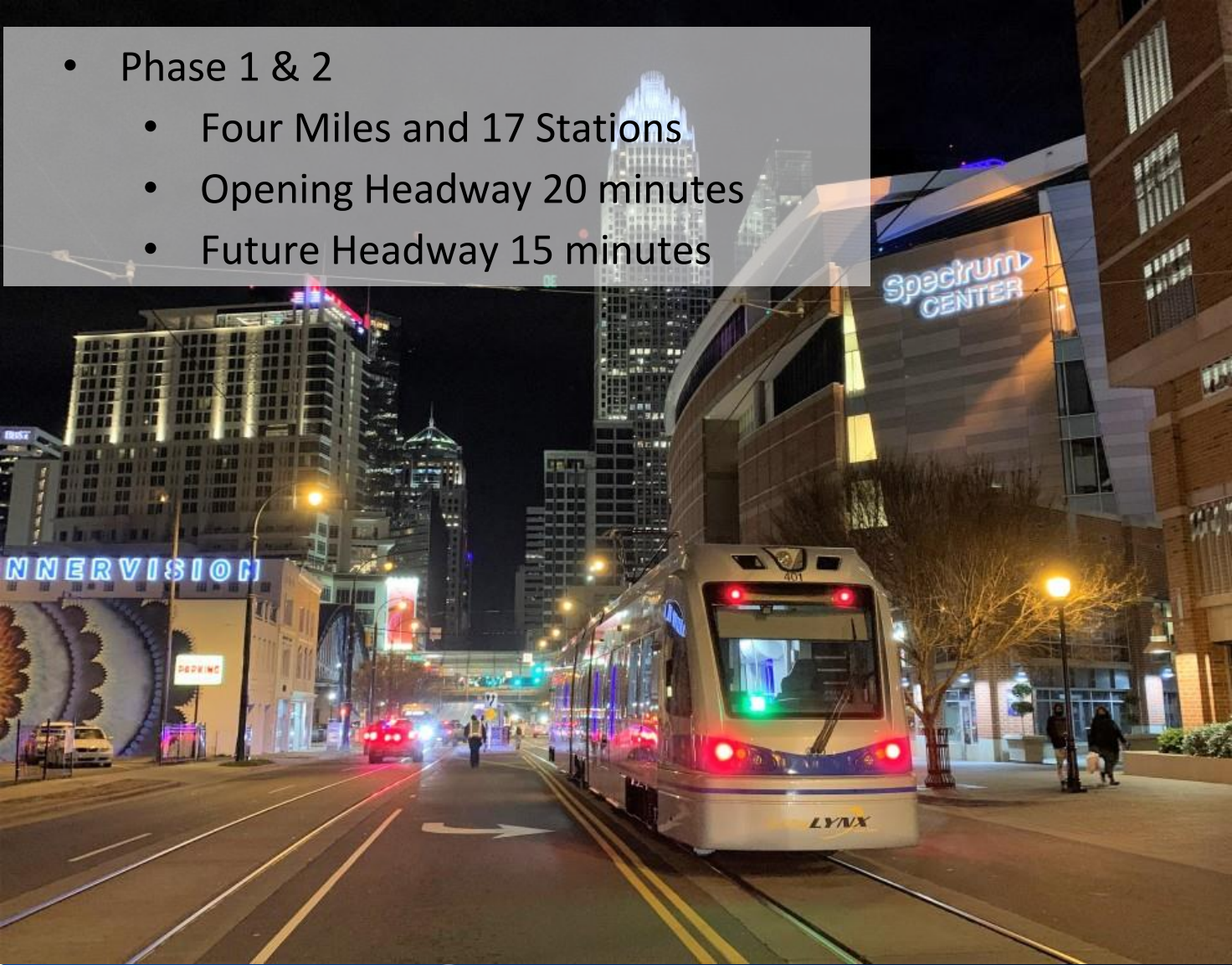
Streetcar No. 85 on flat-bed truck bound for North Carolina Transportation Museum in Spencer.
COURTESY OF STEVE MERSCH



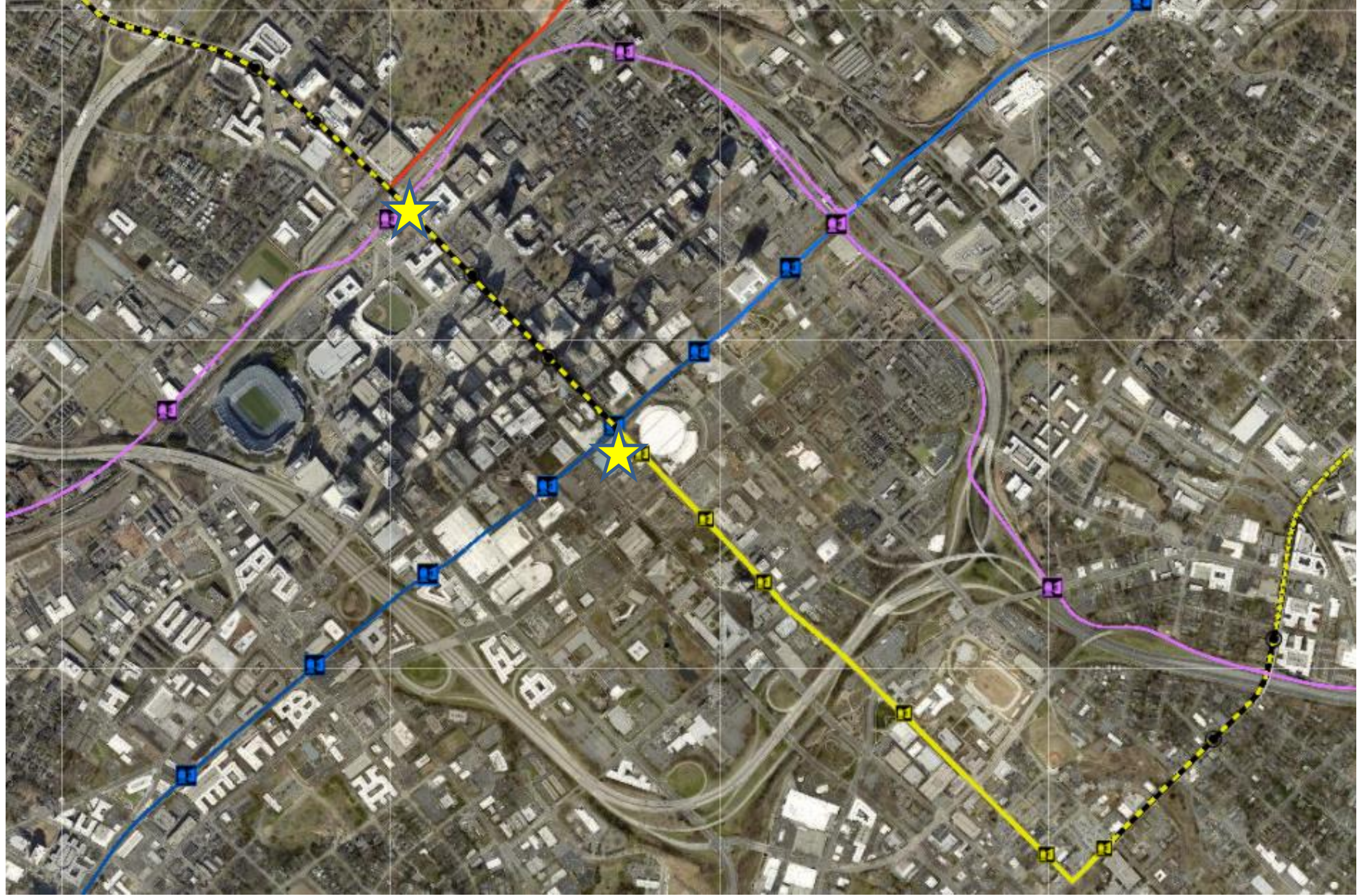


CityLYNX Gold Line

- Phase 1 & 2
 - Four Miles and 17 Stations
 - Opening Headway 20 minutes
 - Future Headway 15 minutes









Charles
Trent
Fashion

MEN'S & BOYS
LATEST STYLES

PANTS

PANTS

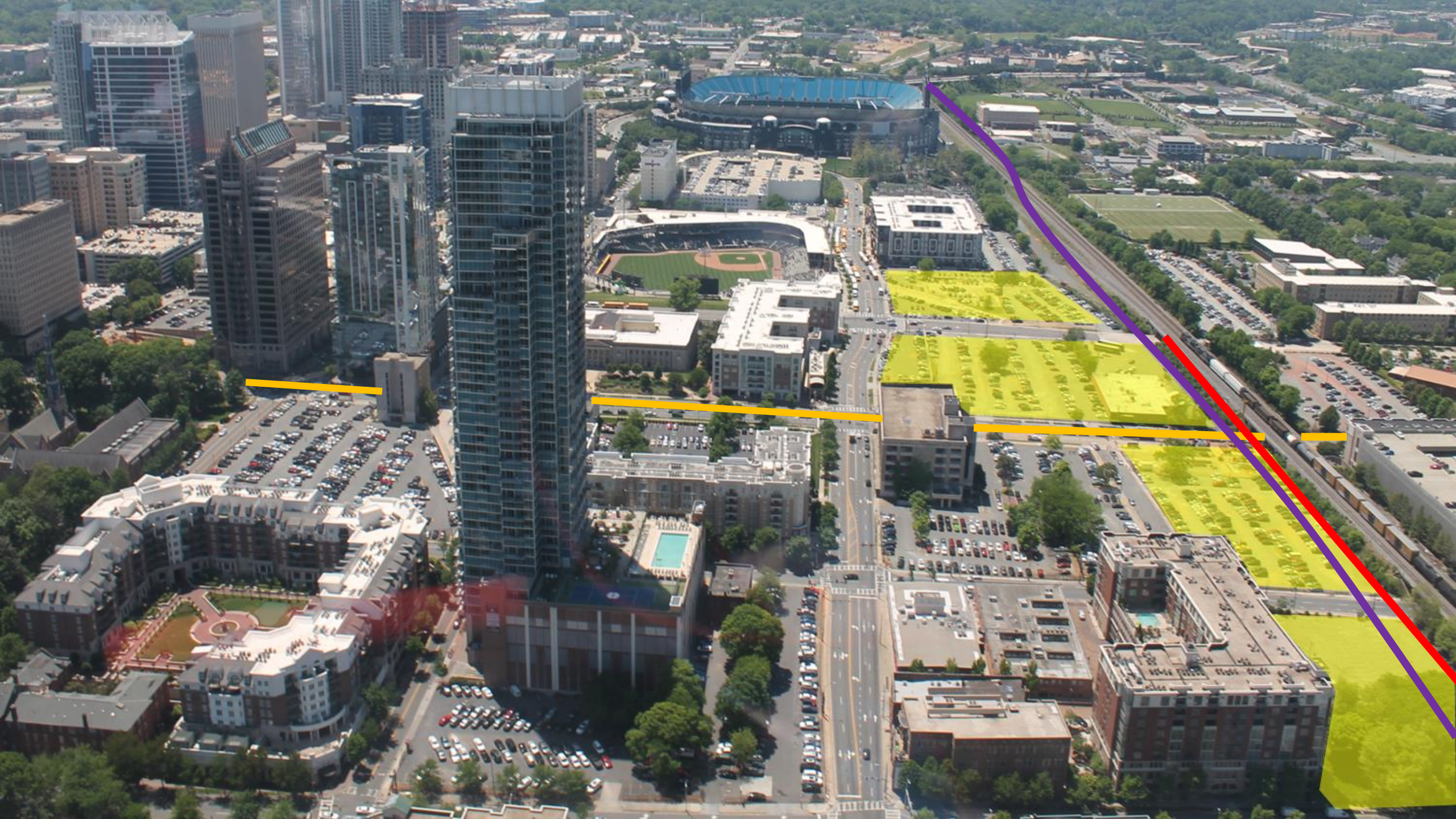
Candy's





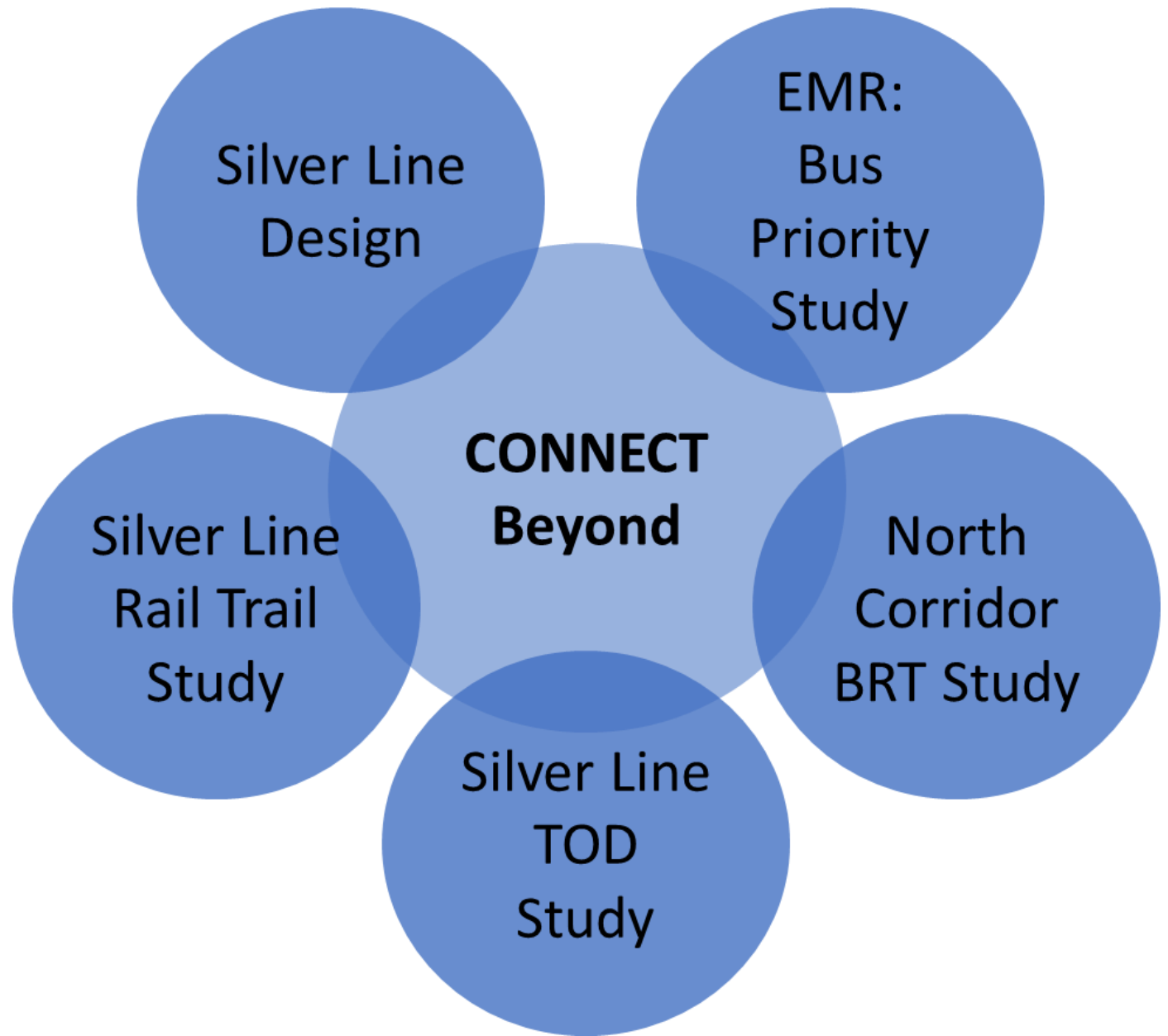
Square to Center







Advancing the Vision





The Pandemic has created new questions and considerations

- What does Transit look like during and post pandemic?
- Has highlighted the importance of essential service and workers
- There is a need for an essential services network plan.
- Proved how important our work is to a functioning society.
- Provides a unique opportunity to revision and rebuild our network not based solely on ridership but on value to the community
- Prior to covid, big changes would be incremental. Now, mobility can, will, and must change quickly.
- The need for passenger data is even more necessary.
- Social distancing must be considered in all aspects of planning and operating.
- We must incorporate resiliency as a planning metric



- We need data...lots of it
 - What is the peak, is there one?
 - Are mobility needs the same?
- Stakeholder engagement
 - Who's coming back when...and how many?
 - Work more closely with town staff on service and amenities
- Start at the stop
 - Will be advertising a procurement for new family of amenities
 - Develop an optimization and improvement plan



Frequency Based Approach

Base Frequency: 15 Minutes		
Route	Route Name	Frequency
5	Sprinter Airport	15
7	Beatties Ford	15
9	Central	10
16	S. Tryon	15
27	Monroe	15

Base Frequency: 20 Minutes		
Route	Route Name	Frequency
6	Kings Dr	20
8	Tuckaseegee	20
10	West Blvd	20
11	North Tryon	20
21	Statesville Ave	20
34	Freedom Drive	20
211	Hidden Valley	20

Base Frequency: 30 Minutes		
Route	Route Name	Frequency
1	Mt. Holly Rd	30
2	Ashley Rd	30
3	The Plaza	30
4	Belmont	30
13	Nevin Road	30
14	Providence Rd	30
15	Randolph Rd	30
17	Independence Blvd	30
22	Graham	30
23	Shamrock	30
29	JW Clay/UNCC	30
56	Arrowood	30
58	Pineville	30
60	Tyvola	30
221	Idlewild	30

Base Frequency: 40+ Minutes		
Route	Route Name	Frequency
12	South Blvd	45
18	Paw Creek	45
19	Park Rd	45
20	Sharon Rd	60
24	Nations Ford Rd	45
26	Oaklawn Ave	45
28	Fairview Rd	40
30	Woodlawn/Scaleybark	35
39	Eastway	40
43	Ballantyne	60
51	Pineville-Matthews	45
54	URP/CIC	45
55	Westinghouse	45
57	Archdale	60
59	N. Meck, Connector	60
97	VR - Cornelius	60
98	VR - McCoy Rd	60
99	VR - Town Center	60
222	Pence Rd	60
235	Goodwill	40



Envision My Ride (EMR) launched in 2016 to redesign CATS existing bus system.

Goals:

- Transition from a hub-spoke network
- Developing a more frequent & direct bus network

Implementing improvements in **3-key** areas:

- 1. Structure** ✓
- 2. Frequency** ✓
- 3. Reliability**

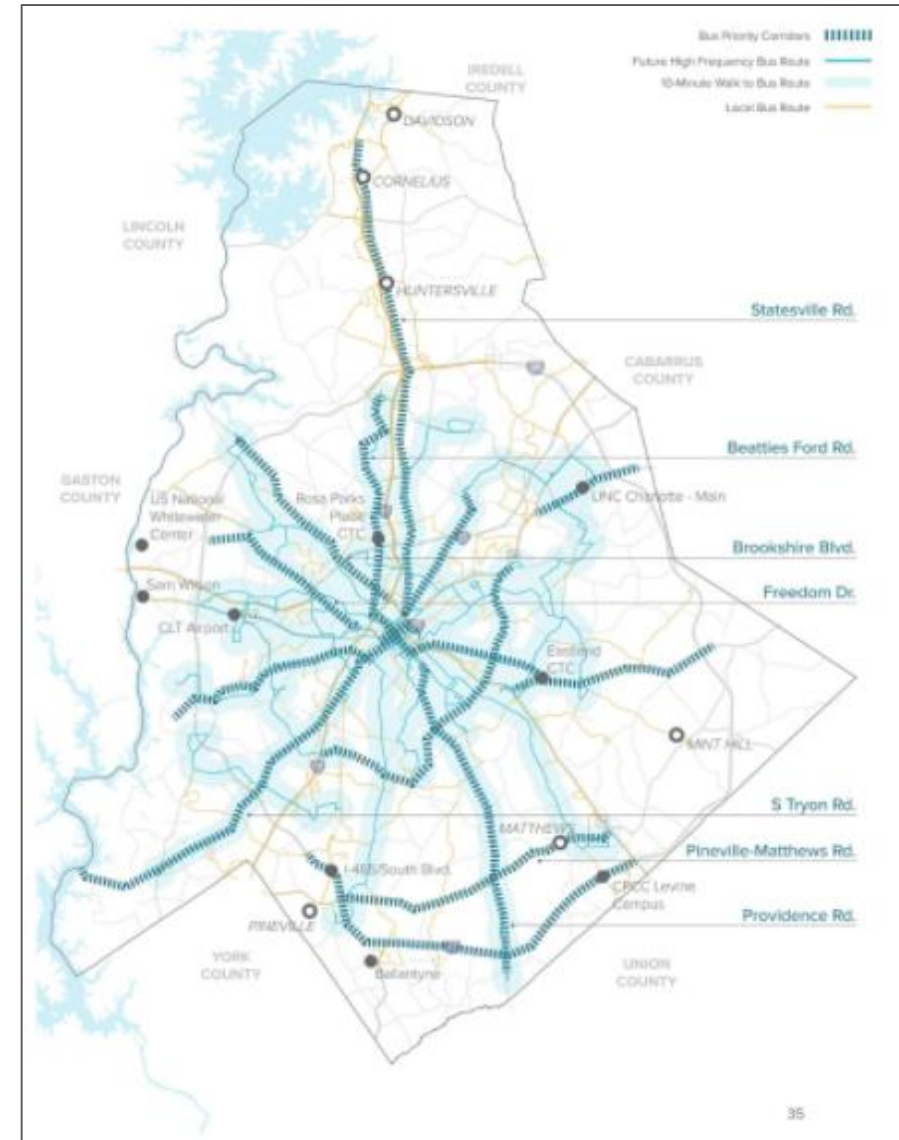




Bus Priority Study

Goals:

- Identify bus enhancements on major corridors to improve speed and reliability
- Bus treatments recommended may include:
 - Bus only lanes
 - Queue jumper
 - Transit signal priority
 - Adjustments to bus stop amenities and spacing





When in doubt, zoom out.

— Reggie Watts —

AZ QUOTES



Austin
Project Connect



Atlanta
More MARTA & The ATL



Denver
FastTracks



Nashville
nMotion

Visions Are Important

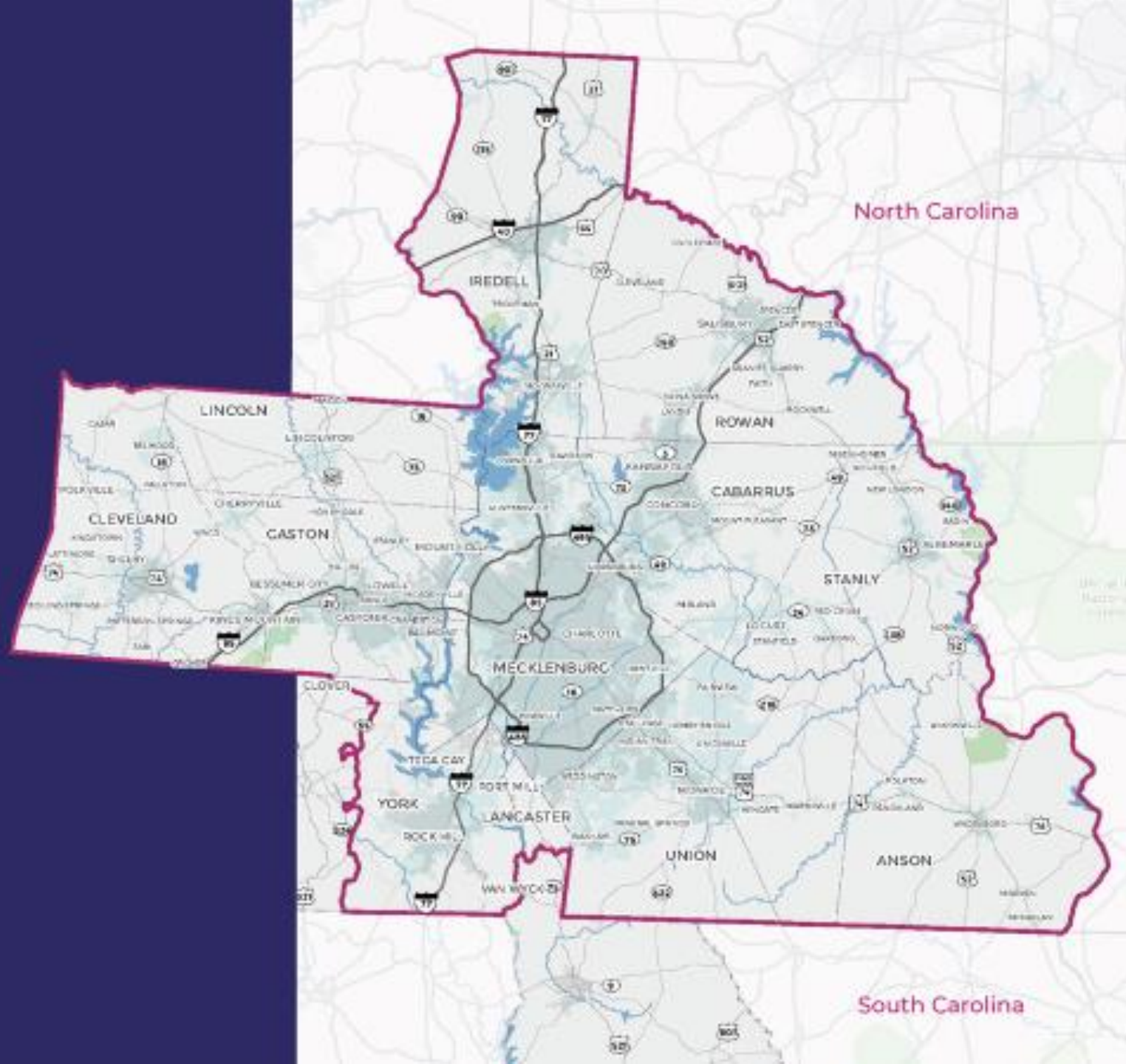
Our Region

2 States

12 Counties

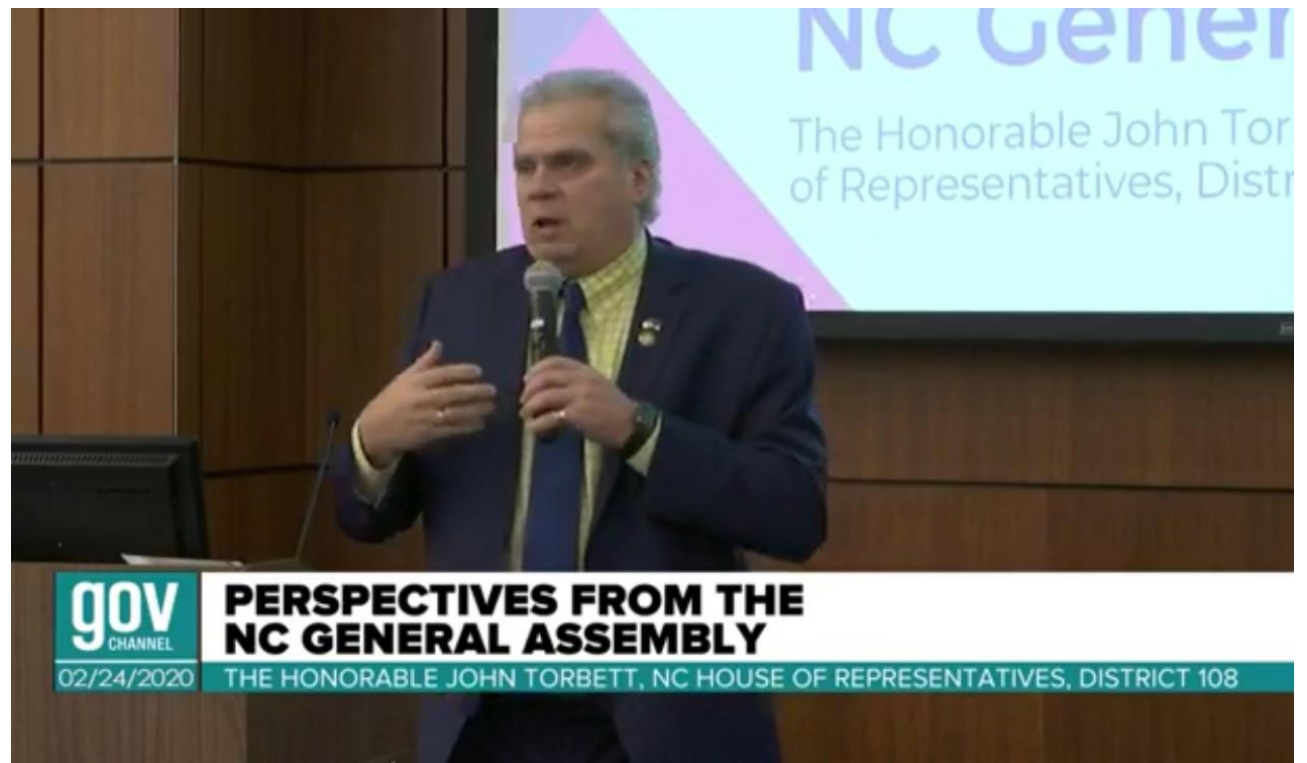
5K Square Miles

2.6 Million People

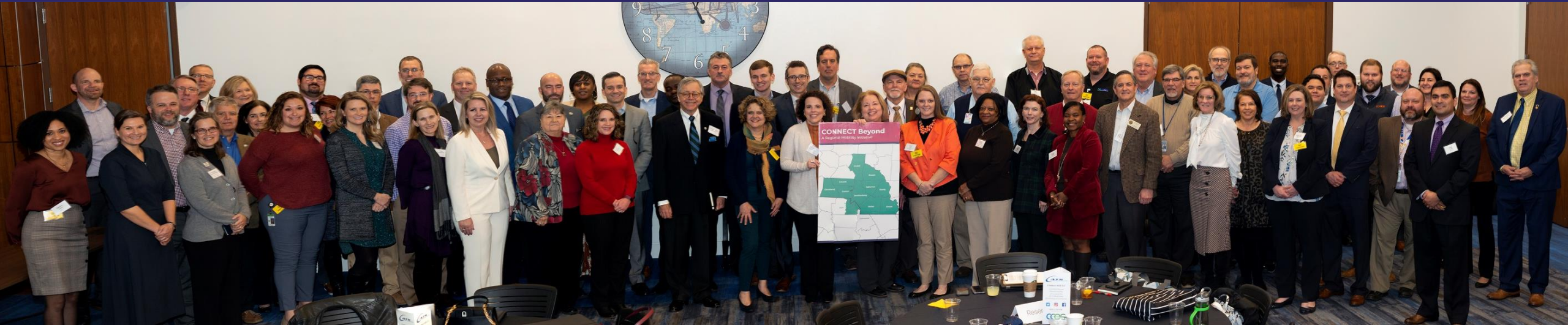




CONNECT Beyond
A Regional Mobility Initiative



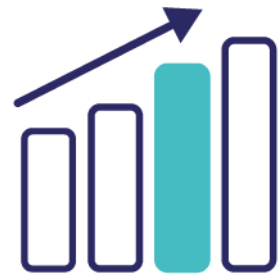
Building a Plan Together



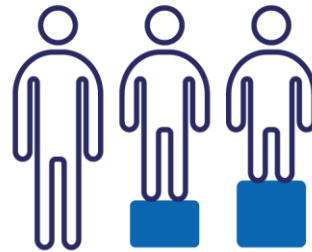
**CONNECT
Beyond**
A Regional Mobility Initiative



**Creating Mobility
Choice**



**Preparing for Future
Growth**



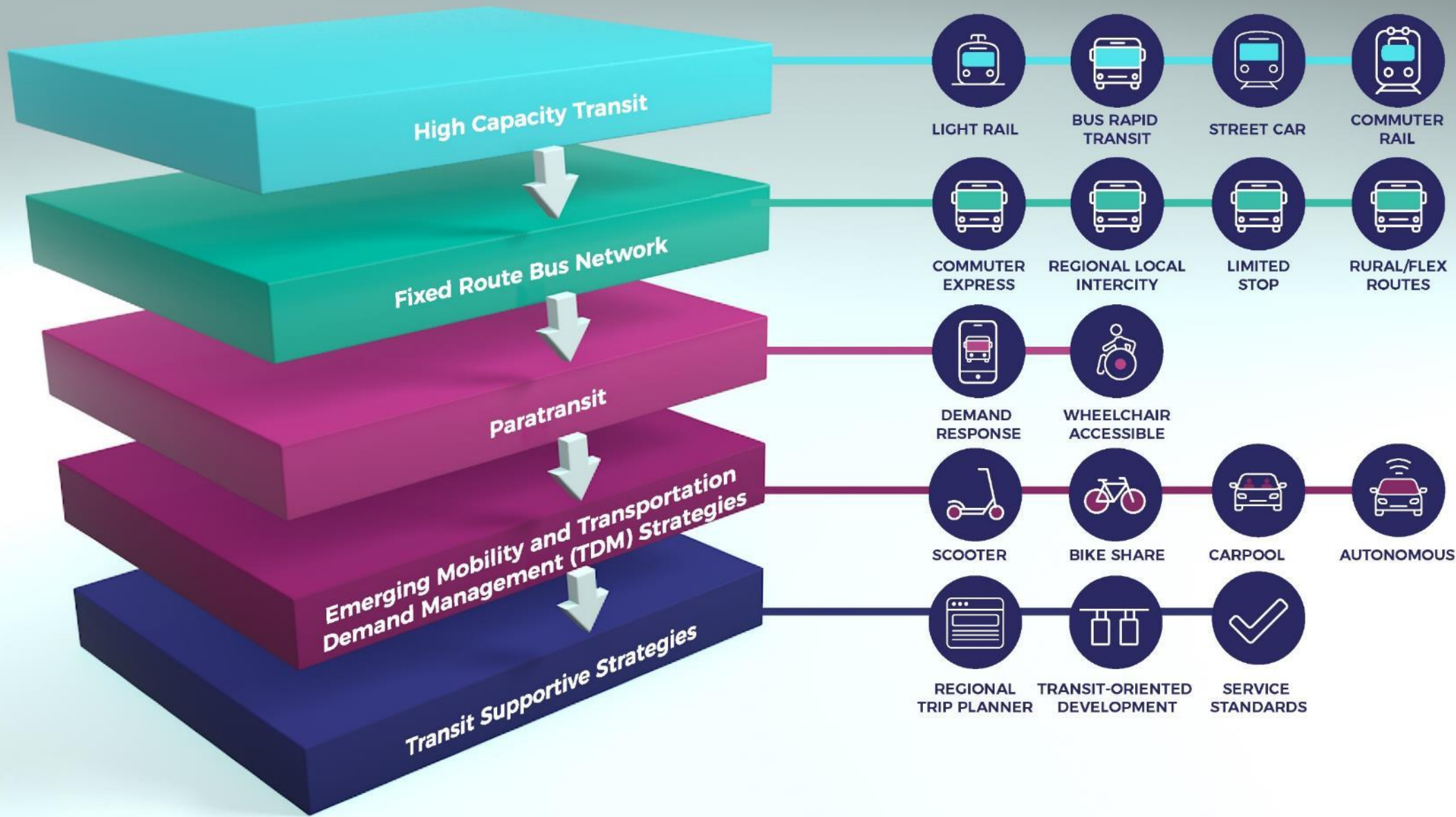
Advancing Equity



**Aligning Plans and
Local Visions**



**Planning for
Implementation**



High Capacity Transit

Fixed Route Bus Network

Paratransit

Emerging Mobility and Transportation Demand Management (TDM) Strategies

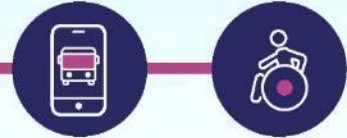
Transit Supportive Strategies



LIGHT RAIL BUS RAPID TRANSIT STREET CAR COMMUTER RAIL



COMMUTER EXPRESS REGIONAL LOCAL INTERCITY LIMITED STOP RURAL/FLEX ROUTES



DEMAND RESPONSE WHEELCHAIR ACCESSIBLE



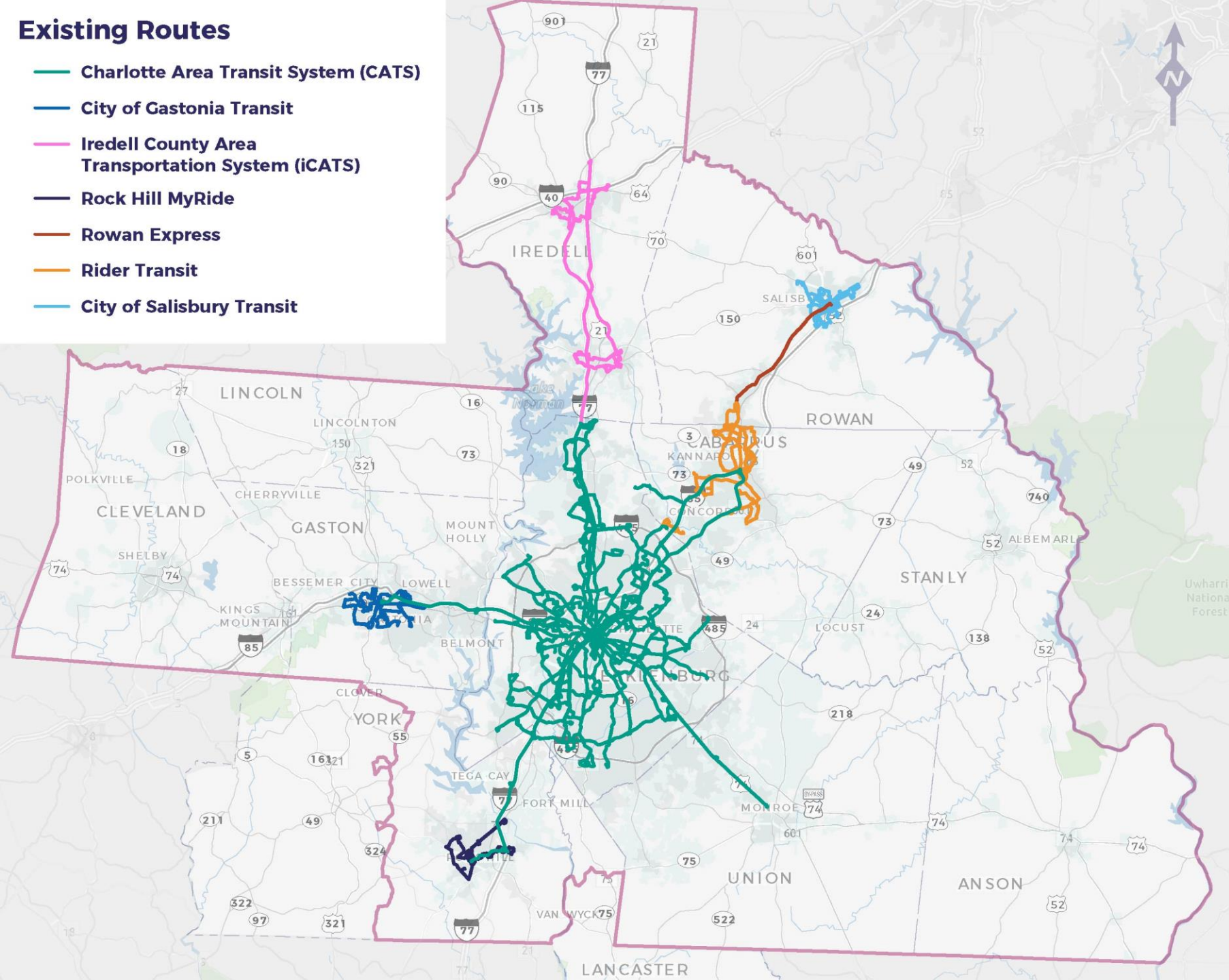
SCOOTER BIKE SHARE CARPOOL AUTONOMOUS



REGIONAL TRIP PLANNER TRANSIT-ORIENTED DEVELOPMENT SERVICE STANDARDS

Existing Routes

- Charlotte Area Transit System (CATS)
- City of Gastonia Transit
- Iredell County Area Transportation System (iCATS)
- Rock Hill MyRide
- Rowan Express
- Rider Transit
- City of Salisbury Transit



Bus Routes in Our Region

Time & Money

Outbound Trip = 3 Hours, 59 Minutes

Return Trip = 4 Hours, 20 Minutes

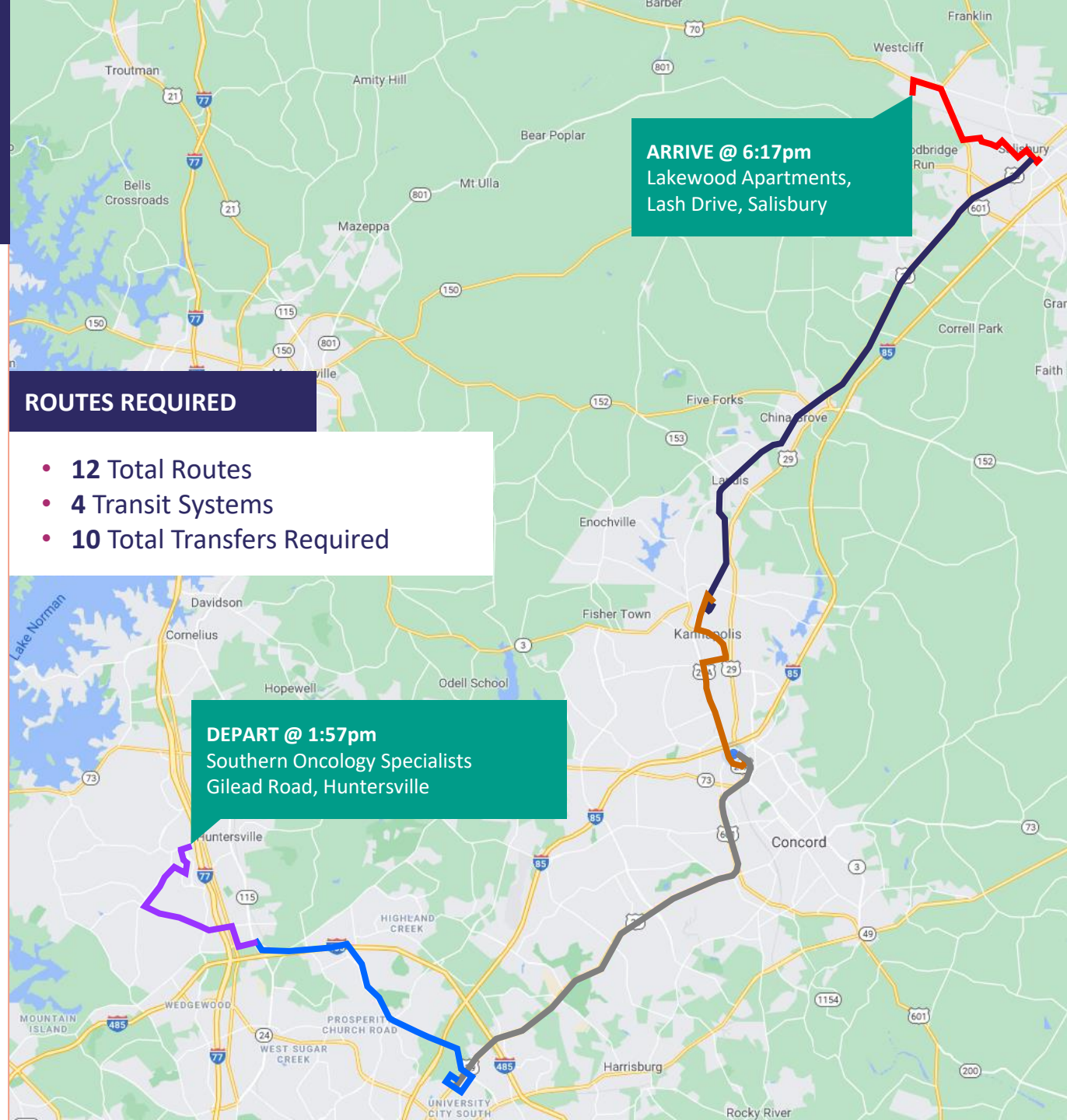
Round Trip
Time
8H 19M



CAR
40-60 Minutes
each way



UBER
Est. \$74.14
Roundtrip





**CONNECT
Beyond**

Building a Better Bus Network



Policy



Technology



Operational



Financial



Interagency
Coordination



Education &
Outreach



- We must plan and build more inclusive and thoughtful infrastructure
- All layers of mobility have to advance.
- Access to opportunity must be integrated into each transit project and service proposal



Thank you!

