

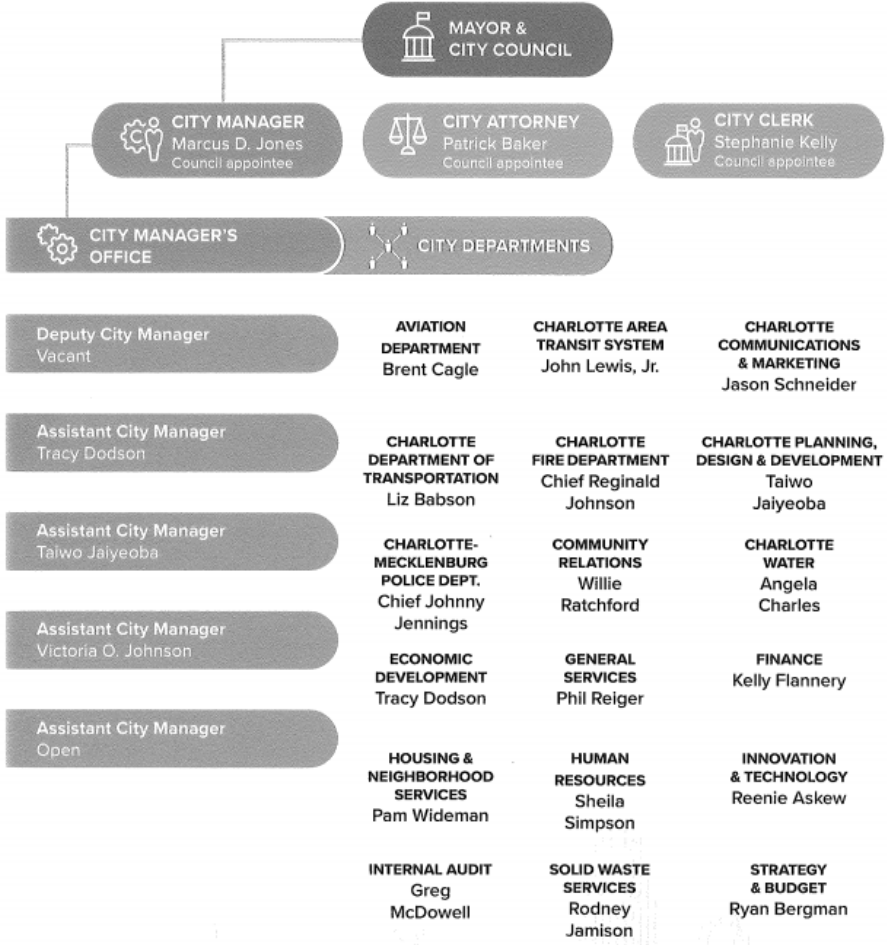
# Charlotte Area Transit System Governance & Organization Overview

- Council Manager
- Metropolitan Transit Commission
- Leadership Team
- Organization
- System

# Council-Manager

Today the council-manager government is the fastest growing form of government in the United States; it frees up the elected body to establish policy, which is carried out by an appointed manager and an administrative staff. The manager is accountable to the entire council for the satisfactory implementation of council policy and the day-to-day administration of municipal affairs.

## CITY OF CHARLOTTE ORGANIZATION



The MTC is CATS policy board and has responsibility for reviewing and recommending all long-range public transportation plans.

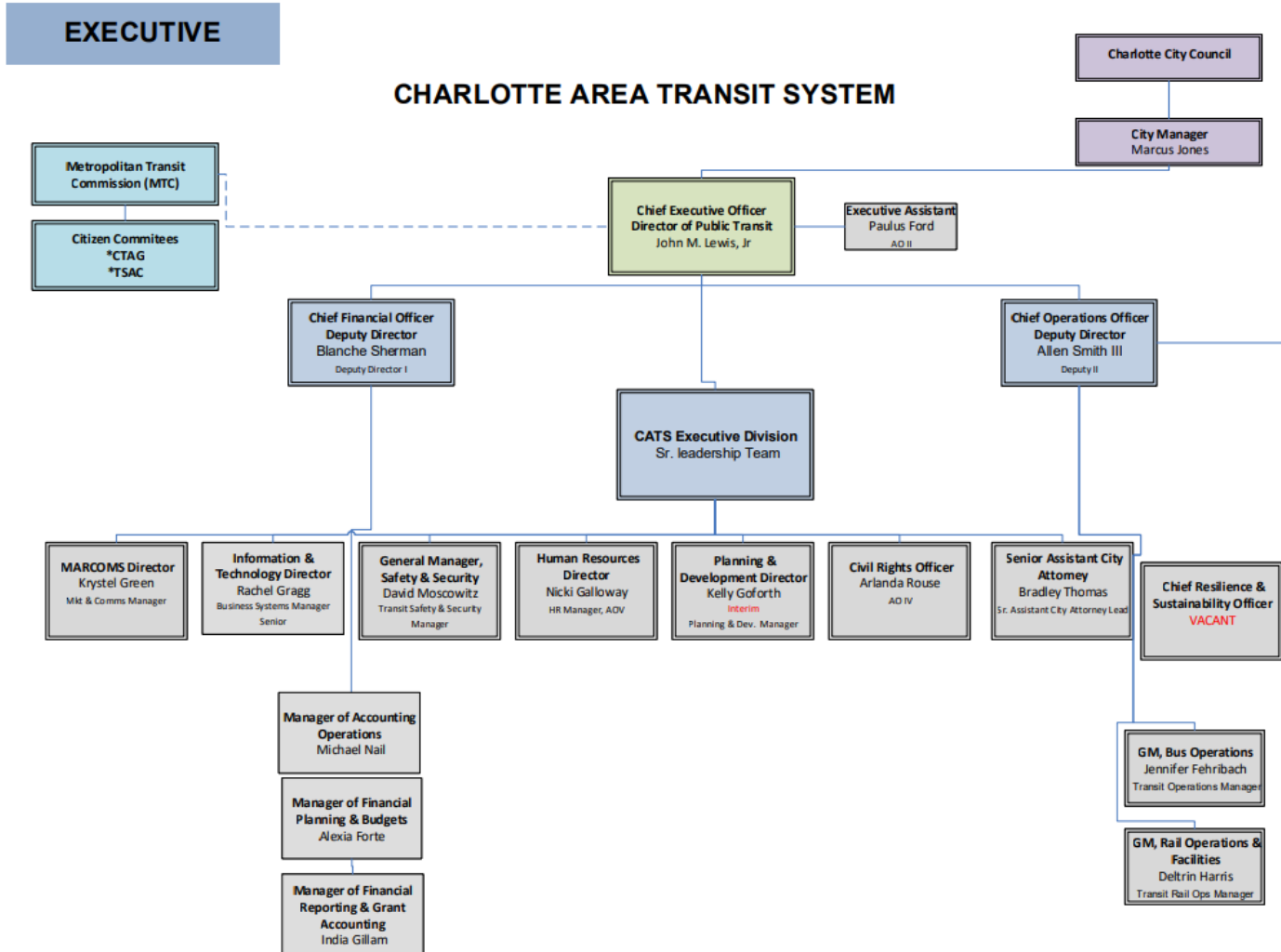
The Board reviews the transit system's operating and capital programs and makes recommendations to the affected governments for their approval and funding of those programs.

The MTC is composed of voting members from the cities and towns located in Mecklenburg County and non-voting members from the surrounding counties to ensure regional involvement.

The MTC is staffed by the City of Charlotte Public Transit Department.



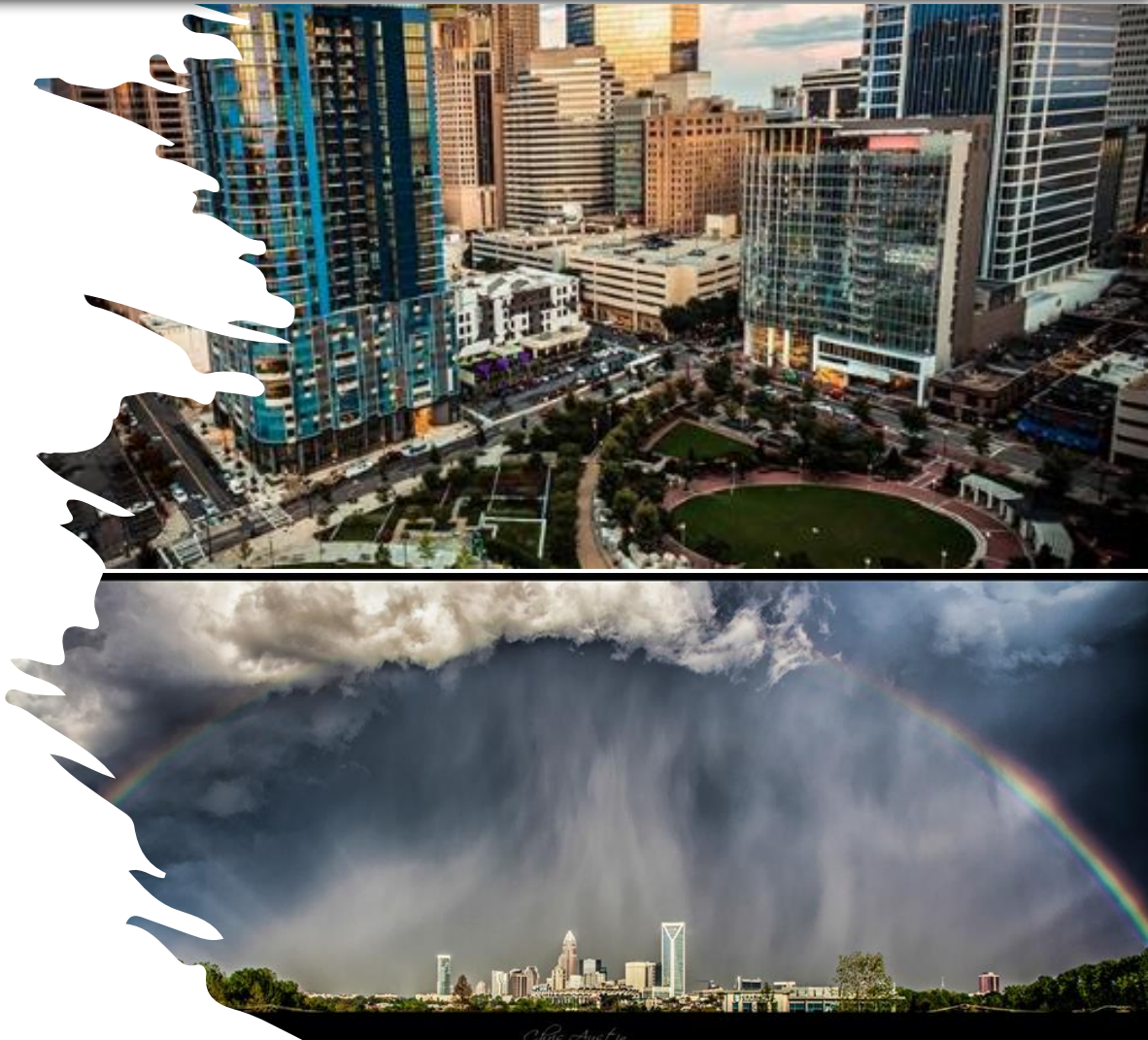
**Chief Executive Officer  
John M. Lewis, Jr.**



\*TSAC – Transit Services Advisory Committee  
 \*CTAG – Citizen Advisory Group  
 \*MARCOMS – Marketing and Communications

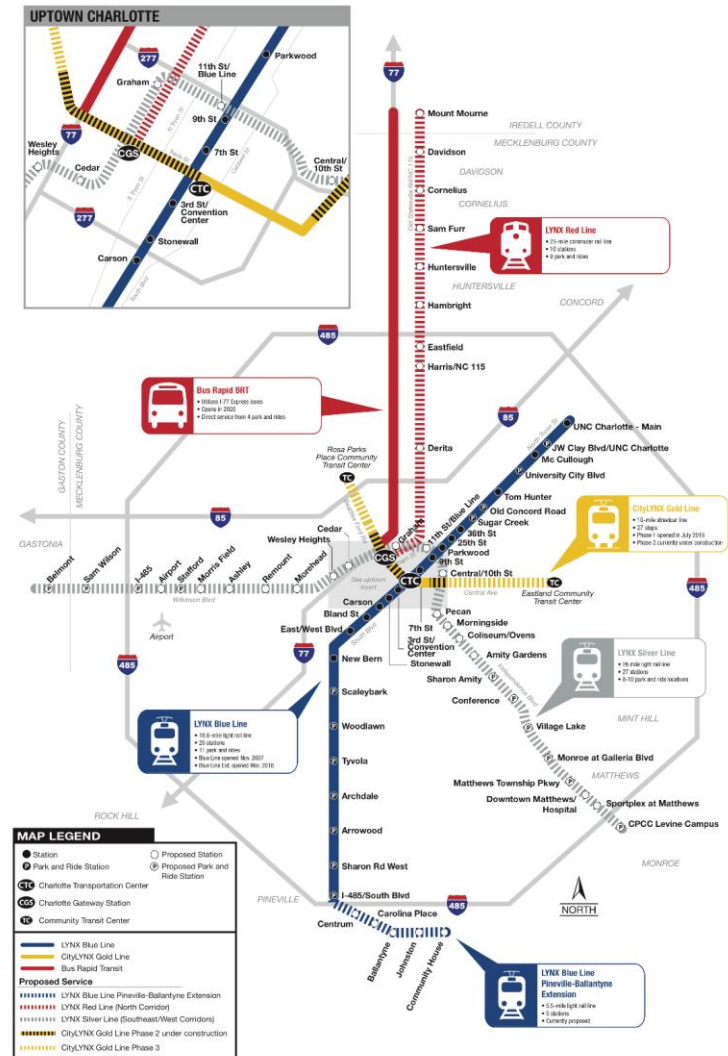
## Charlotte Area Transit System Fast Facts

- Largest transit system between Washington, DC and Atlanta Georgia
- Service Area Population: 1,302,619
- Service Area square miles: 675
- Vehicle Fleet
  - 304 buses
  - 83 Paratransit
  - 42 Siemens S70 Light Rail Vehicles
  - 6 Hybrid Siemens Streetcar Vehicles





- LYNX Blue Line Light Rail
- South Corridor 2007
- Northeast Corridor 2018
- Pineville/Ballantyne Extension
- LYNX Silver Line Light Rail Program
- Design & Environmental Services
- Transit Oriented Development Study
- Rail Trail Study
- North Corridor Strategy
- MetroRapid I-77 BRT Phased Implementation
- LYNX Red Line Commuter Rail
- Continue NS Discussions



- **Phase 1 (2015)**
  - Charlotte Transit Center to Novant Health  
Used “Vintage” trolley
- **Phase 2 Extension (2021 *Under construction*)**
  - Extends to Johnson C. Smith and Sunnyside Ave in Elizabeth
  - Vehicles upgraded to modern Siemens model
- **Phase 3 Extension (*Future*)**
  - Extension to Rosa Parks CTC and Eastland CTC
  - Design update to begin soon

