



DALLAS AREA RAPID TRANSIT

PROPOSED ELECTRIC BUS PROGRAM

1 Dallas Area Rapid Transit received a \$7.5 million grant to buy seven(7) electric-powered buses and the infrastructure needed to support the operation, including a fast-charging station that would be located at the Kay Bailey Hutchison Convention Center Station. (It takes about 10 minutes to charge a bus.)

DART awarded a contract to Proterra, Inc.

Federal Transit Administration (FTA) through the **Low or No Emission Vehicle Deployment Program.**



Proposed Proterra Catalyst-35 in D-Link colors

3 DART plans to deploy the zero-emission, rechargeable-battery powered buses on the downtown circulator service that debuted in November 2013, branded as "D-Link." These buses are equipped with some of the state-of-the-art transit application technologies.

4 The proposed buses, Proterra's Catalyst-35, would be the second group of zero-emission vehicles in DART's transit fleet. Electric light rail vehicles represent the first and largest zero-emission transit fleet in the Southwestern U.S.

Project Partners

In addition to DART and the FTA, other funding and/or Project partners may include:

- City of Dallas
- Downtown Dallas, Inc.
- North Central Texas Council of Governments
- Texas A&M Transportation Institute (TTI)
- Dallas Black Chamber of Commerce
- Greater Hispanic Chamber of Commerce
- Regional Hispanic Contractors Association (of DFW)
- General Land Office of the State of Texas
- Cavallo Energy (DART's electric power provider)
- Proterra (vehicle manufacturer)

About D-Link

D-Link is a public-private partnership among DART, the city of Dallas and Downtown Dallas, Inc. The free bus route connects arts, dining, cultural and entertainment destinations in and around downtown Dallas and the Oak Cliff neighborhood, which includes the Bishop Arts District and The Cedars. In the downtown area, D-Link reaches numerous locations including:

- Dallas Arts District
- Civic Center District and Kay Bailey Hutchison Convention Center
- Main Street District
- Reunion/Union Station District
- Uptown
- Victory Park and American Airlines Center (AAC)
- West End Historic District

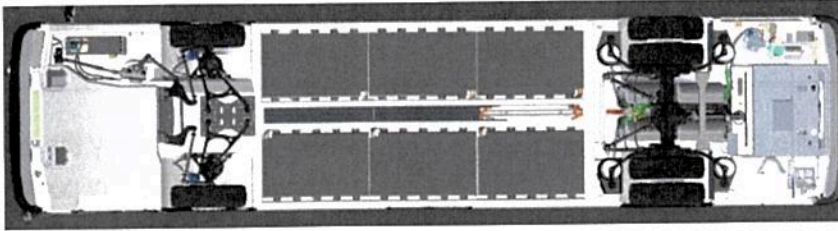
D-Link travels a short route with dedicated, branded vehicles that serve the Dallas city center's significant and busiest destinations. Using electric buses on the D-Link route provides an excellent opportunity to demonstrate the latest electric bus technology.

See reverse for D-Link route map.

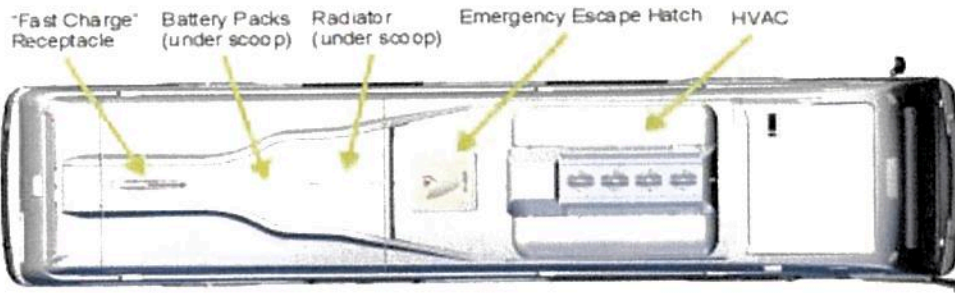
Current D-Link NABI 31-foot compressed natural gas bus



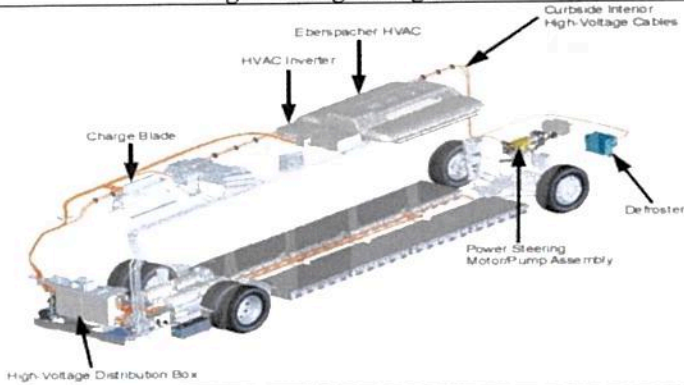
Bus Undercarriage



Bus Roof



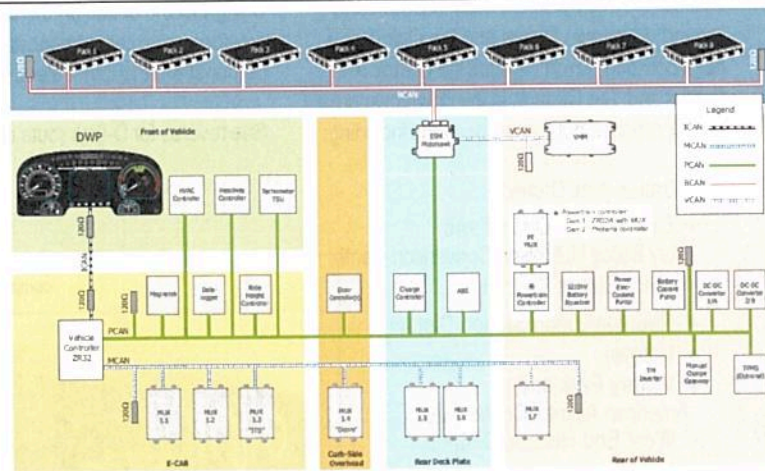
High Voltage Diagram



35' Proterra Bus Catalyst



Vehicle Control System Diagram



Charging System Diagram

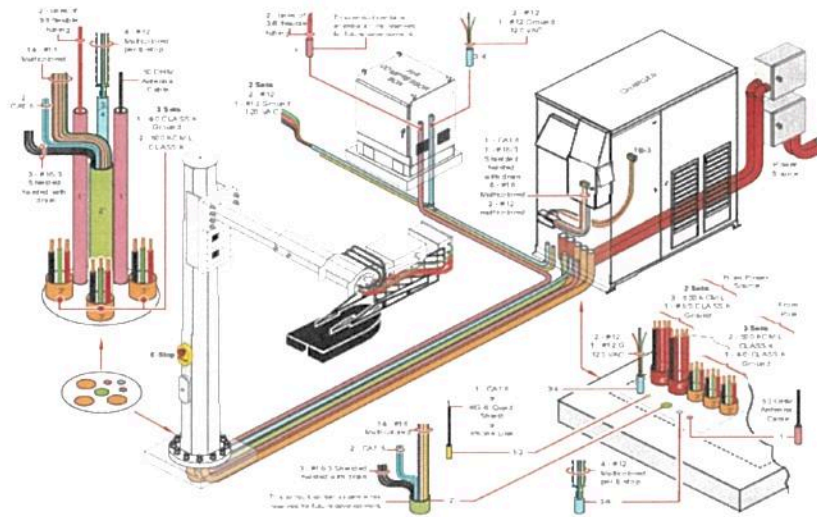


Figure 2-7. Overhead Charge System Equipment Installation Overview

Bus Approach to a Charging Station

The following figure shows a typical approach and turn-in to position the bus for charging.

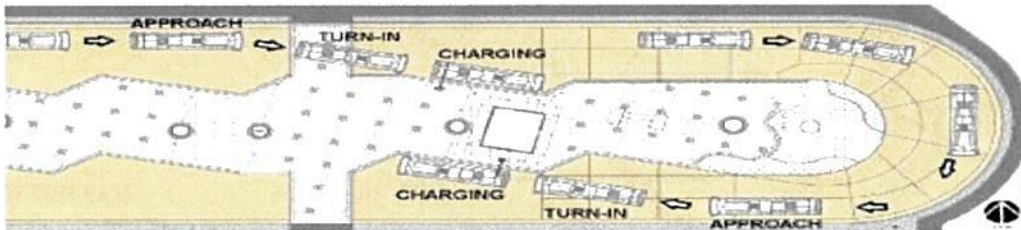
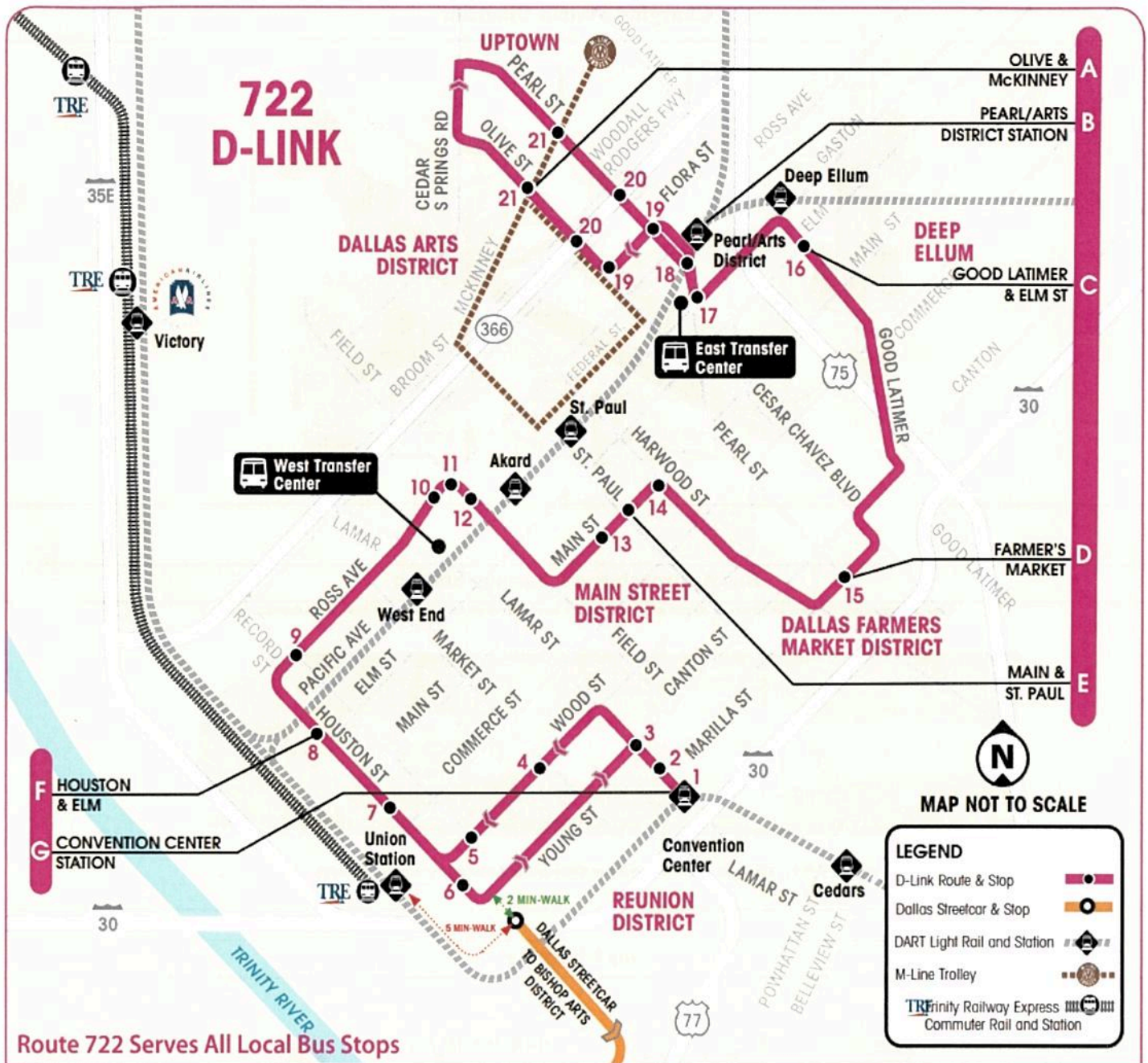


Figure 1-51. Typical Approach to a Charging Station (Example only)

Bus Charging



Downtown Dallas D-Link Route Map



Route 722 Serves All Local Bus Stops

Stop Numbers and Places of Interest

- | | | |
|--|--|---------------------------------|
| 1. Convention Center Station | 8. Sixth Floor Museum at Dealey Plaza | 15. Dallas Farmers Market |
| 2. Kay Bailey Hutchison Convention Center | 9. West End Historic District | 16. Deep Ellum |
| 3. Omni Dallas Hotel/ Restaurants & Founder Square | 10. Dallas World Aquarium | 17. CBD East Transfer Center |
| 4. Lubben Plaza | 11. Perot Museum of Nature and Science | 18. Pearl/Arts District Station |
| 5. Hyatt Regency Dallas | 12. Akard Station | 19. Dallas Arts District |
| 6. Union Station | 13. Pegasus Plaza | 20. Klyde Warren Park |
| 7. Dealey Plaza | 14. Main Street Garden | 21. Hotel Crescent Court |

NO SUNDAY SERVICE
 No Holiday Service on days observed for Memorial Day, July 4, Labor Day, Thanksgiving Day, Christmas Day and New Year's Day. A Saturday schedule will be operated the day after Thanksgiving.

NO HABRÁ SERVICIO LOS DOMINGOS
 No habrá servicio de fiesta en los días que se observa el Memorial Day, July 4, Labor Day, Thanksgiving Day, Christmas Day y el New Year's Day. Horario de Sábado se efectuará el día después del Thanksgiving Day.